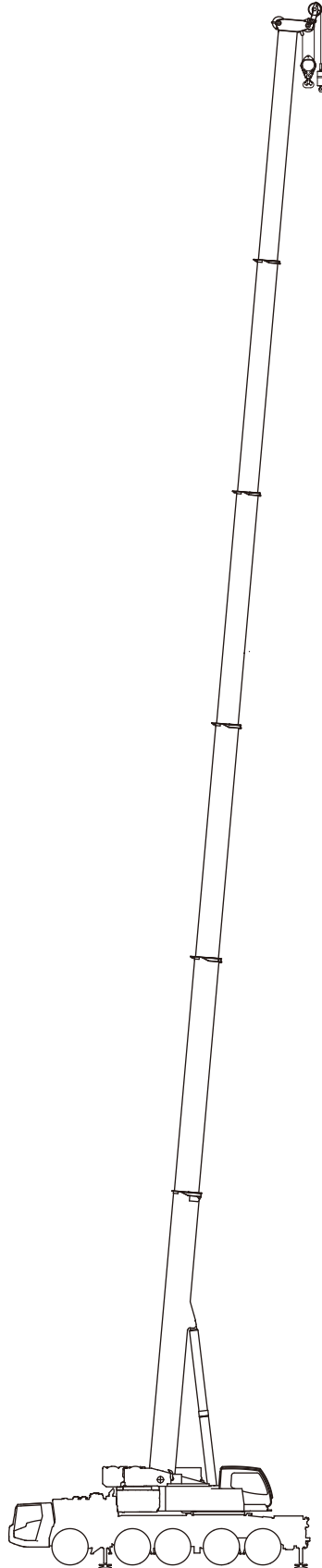


オールテレーンクレーン
ATF-140N-5.1
ブーム



走行

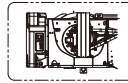
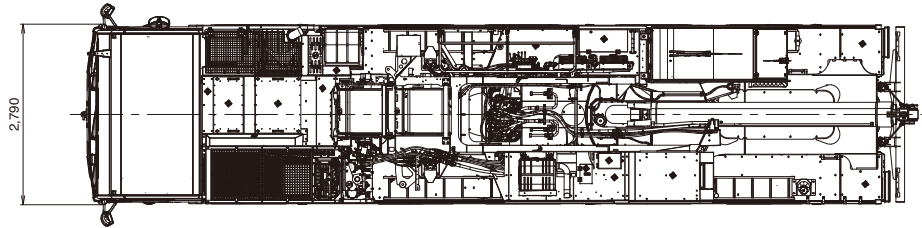
■ 公道走行状態

単位(mm)

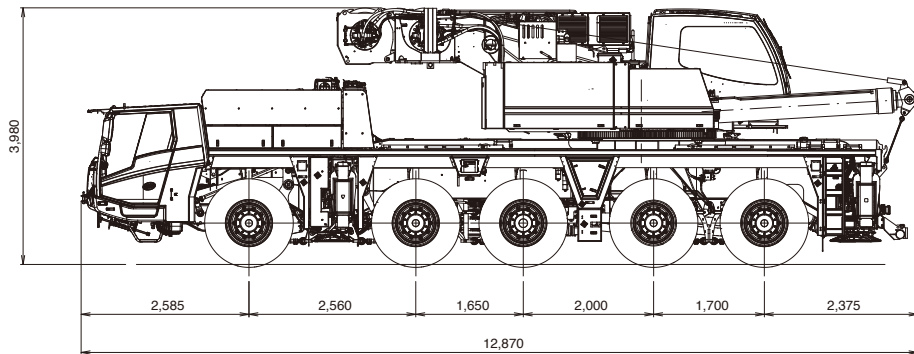
● キャリヤ + 旋回体+起伏シリンダ 37.25 t

(公道走行時の注意事項)

1. ブームおよびカウンタウエイト装置を別送し、旋回体を後方向に向け、旋回ブレーキをかけピンロックした状態で走行しなければなりません。
2. 道路運送車両の保安基準による保安基準緩和の認定が必要です。
3. 道路法による特殊車両の通行許可が必要です。基本通行条件 重量: Cが記載された適合証明書を取得していますが、実際の通行経路で申請して許可された条件にしたがって走行しなければなりません。

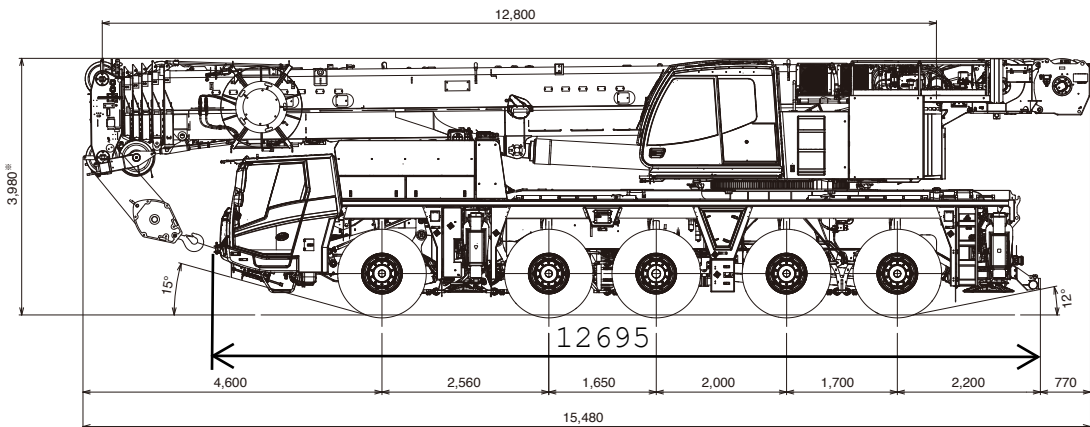
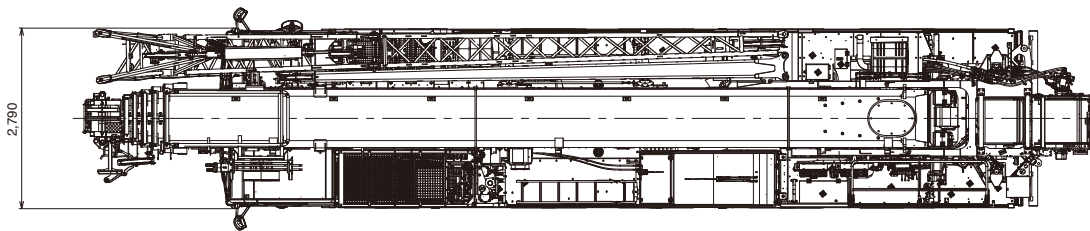


サブウインチ無し
1.5t ウェイト装着時
(オプション)



■ 構内移動姿勢

単位(mm)



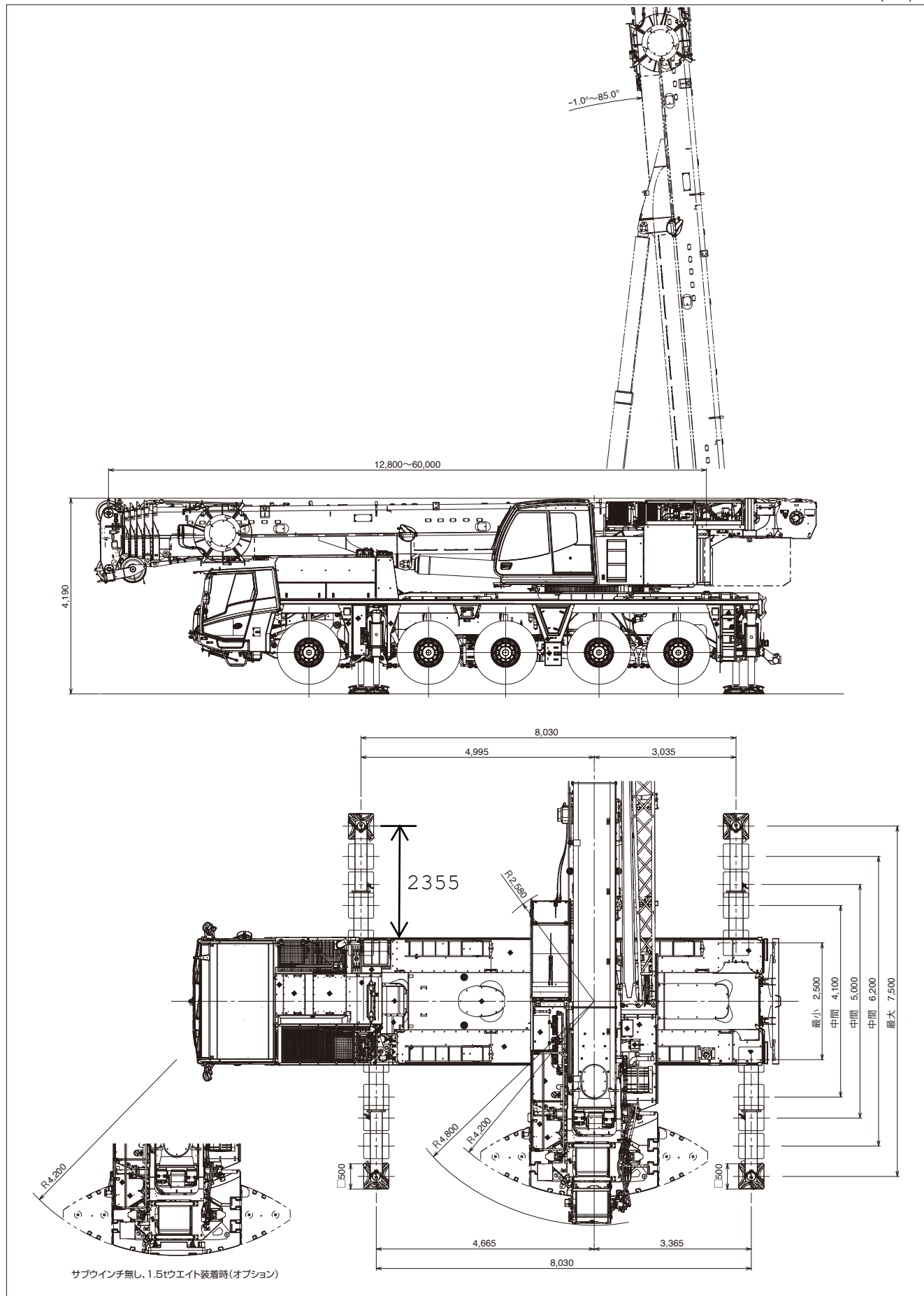
*+155mm、-120mm (サスペンション)

最低地上高: 300mm

設置

■ アウトリガ張出幅・テールスイング

単位(mm)



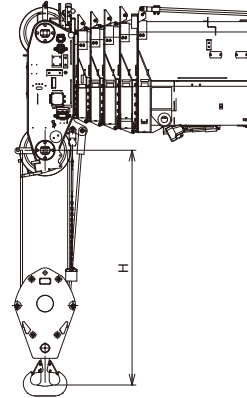
設置

フック寸法

単位(mm)

H：ヘッドシーブ中心とハッカ上面の距離

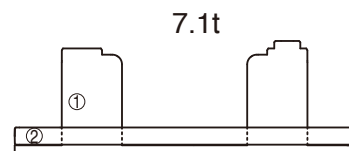
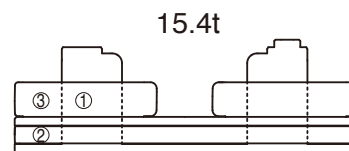
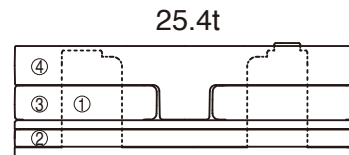
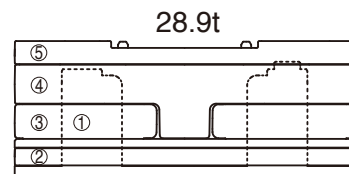
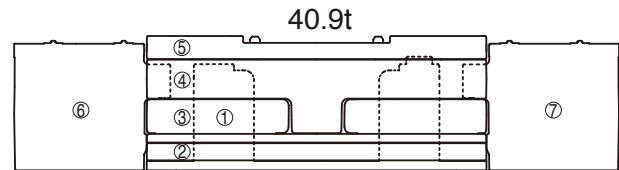
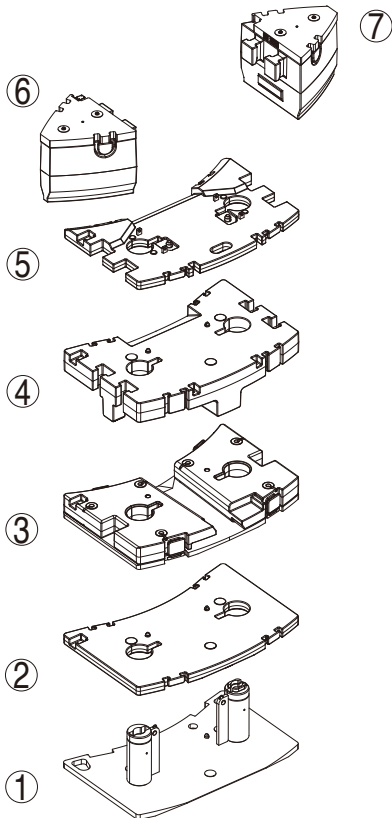
	100tフック	60tフック	26tフック	8.7tフック
ブーム	2.7m	2.5m	2.5m	
シングルトップ				2.5m
1.0m+2.8m HLJ		2.6m	2.6m	
1.0m+9.2m HLJ			3.1m	3.1m
上記以外 HLJ				4.2m
FLJ				3.4m



カウンタウエイト(C/W)組合せ






● 各ウエイトの使用個数を示す


合計重量	ウエイト① 3.1t	ウエイト② 4.0t	ウエイト③ 8.3t	ウエイト④ 10.0t	ウエイト⑤ 3.5t	ウエイト⑥ 6.0t	ウエイト⑦ 6.0t
40.9 t	1	1	1	1	1	1	1
28.9 t	1	1	1	1			
25.4 t	1	1	1				
15.4 t	1	1	1				
7.1 t	1	1					



ブーム

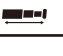


 MB	 40.9 t	 8.0m x 7.5m	 360°	 JPN
---	---	--	---	--

	m	※12.8	12.8	17.1	21.4	25.8	30.1	34.4	38.7	43.0	47.4	51.7	56.0	60.0	m	
	2.5	140.0	114.3												2.5	
	3.0	110.2	103.6	90.0	90.0										3.0	
	3.5	99.6	94.6	90.0	90.0	70.0									3.5	
	4.0	90.8	87.0	87.2	87.0	70.0									4.0	
	4.5	83.3	80.4	80.6	80.4	70.0	54.3								4.5	
	5.0	76.9	74.7	74.9	74.7	70.0	51.3	44.0							5.0	
	6.0	66.5	64.8	65.1	64.8	65.5	50.0	42.3	32.8						6.0	
	7.0	58.3	56.7	57.4	56.7	57.3	49.3	38.4	32.8	27.1					7.0	
	8.0	51.8	49.8	50.7	50.8	50.6	46.0	38.0	32.8	27.1	21.4				8.0	
	9.0	46.4	44.0	44.9	45.0	44.8	43.1	35.8	30.3	27.1	21.4	16.6			9.0	
	10.0	42.0	39.3	40.1	40.2	40.0	40.6	33.7	28.1	26.2	21.4	16.6	13.2		10.0	
	11.0			36.0	36.2	35.9	36.8	31.8	26.2	24.7	21.4	16.6	13.2	10.6	11.0	
	12.0			32.6	32.8	33.5	33.4	30.1	24.5	23.1	21.3	16.6	13.2	10.6	12.0	
	14.0			27.2	27.3	28.3	27.9	27.2	21.6	20.4	19.2	16.6	13.2	10.6	14.0	
	16.0				23.1	24.1	23.6	24.4	19.3	18.2	17.4	15.6	13.2	10.6	16.0	
	18.0				19.3	20.2	21.0	20.5	17.4	16.7	15.7	14.5	12.6	10.6	18.0	
	20.0					17.4	17.8	17.4	15.8	15.2	14.1	13.5	11.9	10.5	20.0	
	22.0					15.6	15.4	15.0	14.5	13.9	12.7	12.2	11.2	9.7	22.0	
	24.0						13.4	13.0	12.9	12.7	11.5	11.0	10.4	9.0	24.0	
	26.0						11.8	11.4	12.0	11.5	10.5	10.0	9.8	8.2	26.0	
	28.0							10.6	10.6	10.2	9.6	9.2	9.0	7.5	28.0	
	30.0							9.9	9.4	9.0	8.7	8.4	8.3	6.9	30.0	
	32.0								8.4	8.0	7.9	7.8	7.6	6.3	32.0	
	34.0								7.6	7.5	7.4	7.2	7.1	5.8	34.0	
	36.0									7.1	6.7	6.5	6.6	5.4	36.0	
	38.0										6.4	6.0	6.1	5.0	38.0	
	40.0										5.9	5.4	5.7	4.6	40.0	
	42.0											4.9	5.3	4.9	4.3	42.0
	44.0											4.5	4.8	4.4	4.0	44.0
	46.0												4.3	4.0	3.8	46.0
	48.0												4.0	3.6	3.5	48.0
	50.0													3.2	3.2	50.0
	52.0													2.8	2.8	52.0
	54.0														2.5	54.0
	56.0														2.2	56.0

※は旋回位置が後方限定の性能を示しています。






 MB	 28.9 t	 8.0m x 7.5m	 360°	 JPN
---	---	--	---	--

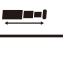
	m	※12.8	12.8	17.1	21.4	25.8	30.1	34.4	38.7	43.0	47.4	51.7	56.0	60.0	m		
	2.5	120.4	113.2												2.5		
	3.0	107.8	102.5	90.0	90.0										3.0		
	3.5	97.5	93.6	90.0	90.0	70.0									3.5		
	4.0	88.9	86.1	86.3	86.1	70.0									4.0		
	4.5	81.5	79.4	79.7	79.5	70.0	54.3								4.5		
	5.0	75.2	73.2	73.5	73.3	70.0	51.3	44.0							5.0		
	6.0	65.0	62.8	63.7	62.8	63.6	50.0	42.3	32.8						6.0		
	7.0	57.0	53.9	54.8	55.0	54.7	49.3	38.4	32.8	27.1					7.0		
	8.0	50.6	47.0	47.8	48.0	47.7	46.0	38.0	32.8	27.1	21.4				8.0		
	9.0	45.4	41.4	42.2	42.4	42.1	43.0	35.8	30.3	27.1	21.4	16.6			9.0		
	10.0	39.3	36.7	37.5	37.7	37.7	38.3	33.7	28.1	26.2	21.4	16.6	13.2		10.0		
	11.0			33.7	33.8	34.8	34.4	31.8	26.2	24.7	21.4	16.6	13.2	10.6	11.0		
	12.0			29.6	29.8	31.0	30.5	30.1	24.5	23.1	21.3	16.6	13.2	10.6	12.0		
	14.0			22.9	23.1	24.2	25.0	24.5	21.6	20.4	19.2	16.6	13.2	10.6	14.0		
	16.0				19.9	20.4	20.3	19.8	19.3	18.2	17.4	15.6	13.2	10.6	16.0		
	18.0				16.7	17.0	16.8	16.4	16.0	16.6	15.7	14.5	12.6	10.6	18.0		
	20.0					14.4	14.2	13.8	14.4	14.0	13.6	13.5	11.9	10.5	20.0		
	22.0					12.3	12.1	12.6	12.3	11.8	11.8	11.9	11.2	9.7	22.0		
	24.0						10.4	11.0	10.5	10.6	10.5	10.2	10.4	9.0	24.0		
	26.0						9.0	9.6	9.1	9.5	9.1	9.4	9.1	8.2	26.0		
	28.0							8.4	8.0	8.3	7.9	8.3	7.9	7.5	28.0		
	30.0							7.5	7.0	7.3	7.3	7.3	6.9	6.9	30.0		
	32.0								6.2	6.6	6.7	6.5	6.1	6.1	32.0		
	34.0									5.4	6.2	6.0	5.7	5.4	34.0		
	36.0										5.5	5.3	5.1	4.7	36.0		
	38.0											5.0	4.7	4.5	4.2	38.0	
	40.0										4.5	4.2	4.0	3.6	3.6	40.0	
	42.0											3.8	3.5	3.2	3.2	42.0	
	44.0												3.4	3.1	2.8	2.8	44.0
	46.0													2.8	2.4	2.4	46.0
	48.0													2.4	2.0	2.0	48.0
	50.0														1.7	1.7	50.0
	52.0														1.4	1.4	52.0
	54.0															1.1	54.0

※は旋回位置が後方限定の性能を示しています。


ブーム

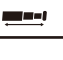


 MB	 25.4 t	 8.0m x 7.5m	 360°	 JPN
---	---	--	---	--

	m	※12.8	12.8	17.1	21.4	25.8	30.1	34.4	38.7	43.0	47.4	51.7	56.0	60.0	m
	2.5	119.7	112.8												2.5
	3.0	107.2	102.2	90.0	90.0										3.0
	3.5	96.9	93.4	90.0	90.0	70.0									3.5
	4.0	88.3	85.8	86.0	85.9	70.0									4.0
	4.5	81.0	78.8	79.1	78.9	70.0	54.3								4.5
	5.0	74.7	72.6	72.9	72.7	70.0	51.3	44.0							5.0
	6.0	64.6	61.8	62.7	61.8	62.6	50.0	42.3	32.8						6.0
	7.0	56.6	53.0	53.9	54.1	53.8	49.3	38.4	32.8	27.1					7.0
	8.0	50.3	46.1	47.0	47.1	46.9	46.0	38.0	32.8	27.1	21.4				8.0
	9.0	44.2	40.5	41.4	41.5	41.3	42.1	35.8	30.3	27.1	21.4	16.6			9.0
	10.0	36.6	35.9	36.8	36.9	37.7	37.5	33.7	28.1	26.2	21.4	16.6	13.2		10.0
	11.0			32.0	32.2	33.4	32.9	31.8	26.2	24.7	21.4	16.6	13.2	10.6	11.0
	12.0			27.6	27.8	29.0	28.5	29.4	24.5	23.1	21.3	16.6	13.2	10.6	12.0
	14.0			22.2	21.9	23.0	23.3	22.9	21.6	20.4	19.2	16.6	13.2	10.6	14.0
	16.0				18.8	19.0	18.9	18.4	18.0	18.0	17.4	15.6	13.2	10.6	16.0
	18.0				15.5	15.7	15.6	15.1	15.8	15.3	15.0	14.5	12.6	10.6	18.0
	20.0					13.2	13.0	13.6	13.2	12.8	12.8	12.8	11.9	10.5	20.0
	22.0					11.2	11.0	11.7	11.2	11.3	11.1	10.8	11.2	9.7	22.0
	24.0						9.4	10.1	9.6	9.9	9.5	10.0	9.6	9.0	24.0
	26.0						8.2	8.7	8.3	8.6	8.6	8.6	8.3	8.2	26.0
	28.0							7.6	7.2	7.6	7.8	7.5	7.1	7.2	28.0
	30.0							6.8	6.3	7.0	6.8	6.6	6.2	6.2	30.0
	32.0								5.8	6.2	6.0	5.8	5.4	5.4	32.0
	34.0								5.4	5.5	5.3	5.1	4.7	4.7	34.0
	36.0									4.9	4.7	4.5	4.1	4.1	36.0
	38.0									4.4	4.2	3.9	3.6	3.6	38.0
	40.0									3.9	3.7	3.5	3.1	3.1	40.0
	42.0										3.3	3.0	2.7	2.7	42.0
	44.0										2.9	2.7	2.3	2.3	44.0
	46.0											2.3	1.9	1.9	46.0
	48.0											2.0	1.6	1.6	48.0
	50.0												1.3	1.3	50.0
	52.0												1.0	1.0	52.0

※は旋回位置が後方限定の性能を示しています。






 MB	 15.4 t	 8.0m x 7.5m	 360°	 JPN
---	---	--	---	--



	m	※12.8	12.8	17.1	21.4	25.8	30.1	34.4	38.7	43.0	47.4	51.7	56.0	60.0	m
	2.5	117.5	111.9												2.5
	3.0	105.2	101.3	90.0	90.0										3.0
	3.5	95.1	92.4	90.0	90.0	70.0									3.5
	4.0	86.7	84.1	84.4	84.2	70.0									4.0
	4.5	79.5	76.9	77.2	77.0	70.0	54.3								4.5
	5.0	73.4	69.9	70.6	70.0	70.0	51.3	44.0							5.0
	6.0	63.3	58.7	59.6	59.8	59.5	50.0	42.3	32.8						6.0
	7.0	55.5	50.1	51.0	51.2	50.9	49.3	38.4	32.8	27.1					7.0
	8.0	44.3	43.3	44.2	44.4	44.1	45.0	38.0	32.8	27.1	21.4				8.0
	9.0	35.4	35.4	36.6	36.8	38.2	37.7	35.8	30.3	27.1	21.4	16.6			9.0
	10.0	29.2	29.2	30.2	30.4	31.7	32.0	32.2	28.1	26.2	21.4	16.6	13.2		10.0
	11.0			25.5	26.1	27.6	27.8	27.4	26.2	24.7	21.4	16.6	13.2	10.6	11.0
	12.0			22.8	23.9	24.2	24.0	23.5	23.0	23.0	21.3	16.6	13.2	10.6	12.0
	14.0			17.1	18.2	18.5	18.3	17.8	18.6	18.1	17.7	16.6	13.2	10.6	14.0
	16.0				14.3	14.6	14.5	15.2	14.7	14.4	14.6	14.3	13.2	10.6	16.0
	18.0				11.6	12.1	11.7	12.4	11.9	12.3	12.1	12.3	11.9	10.6	18.0
	20.0					10.4	9.6	10.3	9.8	10.5	10.5	10.2	9.8	9.8	20.0
	22.0					8.7	8.0	9.2	8.8	9.0	8.8	8.6	8.2	8.2	22.0
	24.0						7.2	7.9	7.7	7.7	7.5	7.2	6.8	6.9	24.0
	26.0						6.5	6.8	6.7	6.6	6.4	6.2	5.8	5.8	26.0
	28.0							5.9	5.7	5.7	5.5	5.3	4.9	4.9	28.0
	30.0							5.1	5.0	4.9	4.7	4.5	4.1	4.1	30.0
	32.0								4.3	4.3	4.1	3.8	3.5	3.5	32.0
	34.0								3.8	3.7	3.5	3.3	2.9	2.9	34.0
	36.0									3.2	3.0	2.8	2.3	2.4	36.0
	38.0									2.8	2.5	2.3	1.8	1.8	38.0
	40.0									2.4	2.1	1.8	1.4	1.4	40.0
	42.0										1.7	1.4	1.0	1.0	42.0
	44.0										1.3	1.1			44.0

※は旋回位置が後方限定の性能を示しています。

ブーム

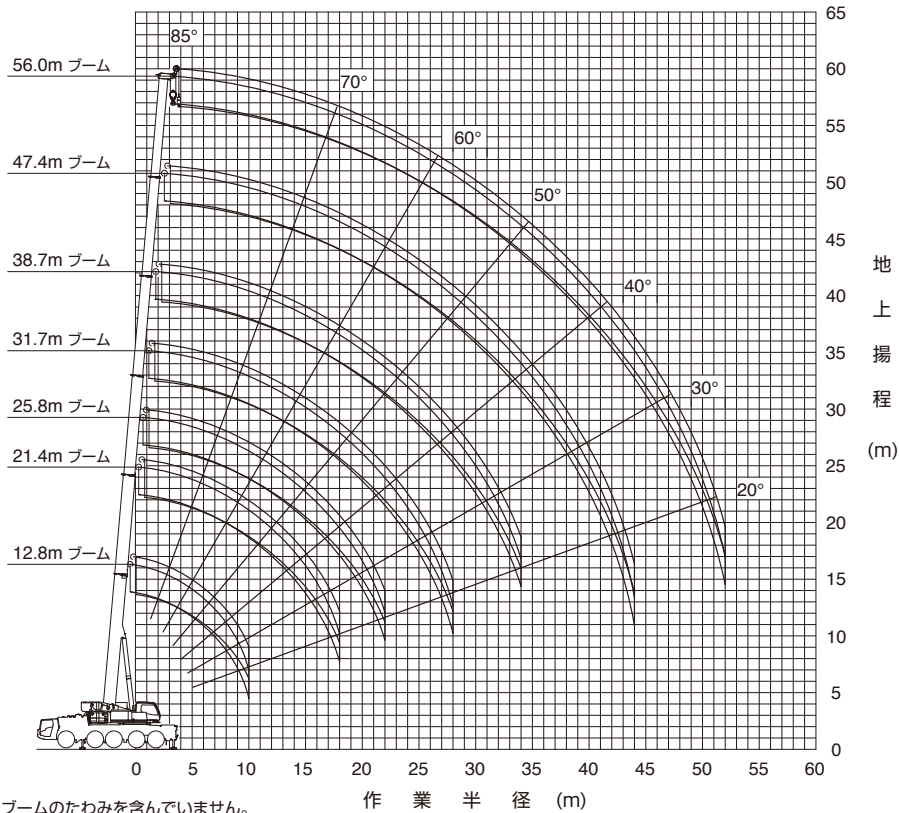


 MB	 7.1 t	 8.0m x 7.5m	 0°	 JPN
---	--	--	---	--

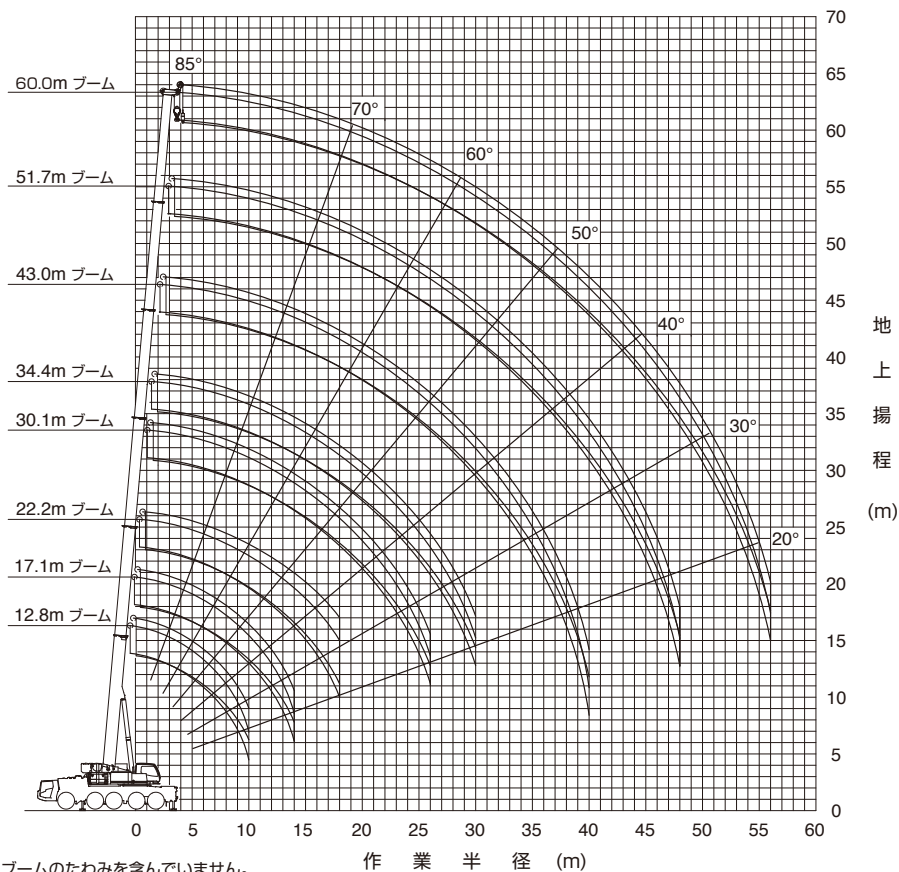
	m	※12.8	12.8	17.1	21.4	25.8	30.1	34.4	38.7	43.0	47.4	51.7	56.0	60.0	m
	2.5	115.8	111.1												2.5
	3.0	103.7	100.5	90.0	90.0										3.0
	3.5	93.7	90.8	90.0	90.0	70.0									3.5
	4.0	85.4	82.0	82.4	82.1	70.0									4.0
	4.5	78.3	73.9	74.5	74.0	70.0	54.3								4.5
	5.0	72.3	67.0	68.0	67.6	67.9	51.3	44.0							5.0
	6.0	62.4	56.0	56.9	57.1	56.8	50.0	42.3	32.8						6.0
	7.0	47.2	47.2	48.4	48.6	48.3	49.3	38.4	32.8	27.1					7.0
	8.0	35.8	35.8	37.1	37.4	38.9	38.3	38.0	32.8	27.1	21.4				8.0
	9.0	28.4	28.1	29.4	30.2	31.7	32.2	31.7	30.3	27.1	21.4	16.6			9.0
	10.0	23.2	22.5	24.9	26.2	26.6	26.3	25.8	25.2	25.2	21.4	16.6	13.2		10.0
	11.0			20.7	21.8	22.2	22.0	21.4	21.9	21.7	21.3	16.6	13.2	10.6	11.0
	12.0			17.4	18.5	18.9	18.7	19.5	18.9	18.4	18.4	16.6	13.2	10.6	12.0
	14.0			12.8	13.9	14.8	14.0	14.8	14.2	14.7	14.7	14.3	13.2	10.6	14.0
	16.0				10.8	11.7	10.9	12.2	11.8	12.0	11.8	11.5	11.1	10.6	16.0
	18.0				8.3	9.4	9.6	9.9	9.8	9.7	9.5	9.2	8.8	8.8	18.0
	20.0					7.0	7.3	7.8	7.6	7.5	7.2	6.8	6.2	6.2	20.0
	22.0					5.2	5.5	5.9	5.7	5.6	5.3	5.0	4.4	4.4	22.0
	24.0						4.1	4.5	4.3	4.2	4.0	3.6	3.1	3.1	24.0
	26.0							3.1	3.4	3.3	3.2	2.9	2.6	2.1	26.0
	28.0								2.6	2.5	2.4	2.1	1.8	1.4	28.0
	30.0								2.0	1.8	1.7	1.5	1.2		30.0
	32.0									1.3	1.2				32.0

※は旋回位置が後方限定の性能を示しています。

ブーム作業半径—揚程図

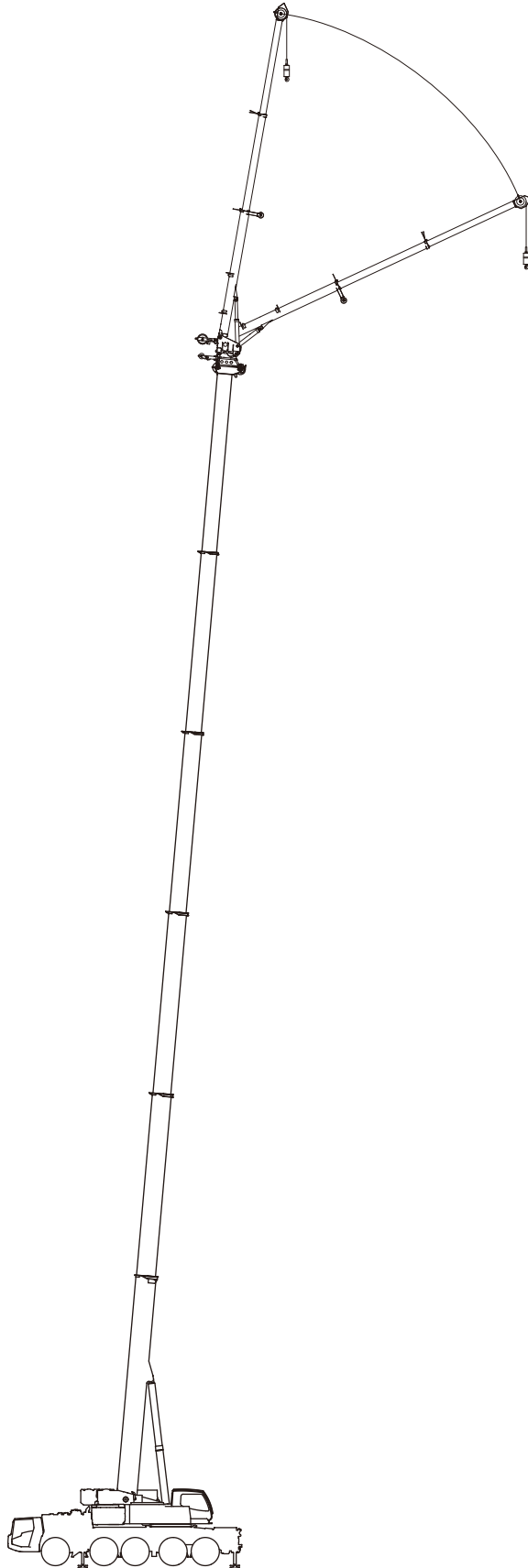


(注意) 1. 上図はブームのたわみを含んでいません。
 2. カウンタウエイト40.9t、アウトリガ張出幅7.5m時の性能を図示しています。

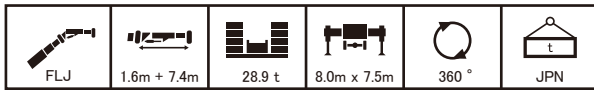


(注意) 1. 上図はブームのたわみを含んでいません。
 2. カウンタウエイト40.9t、アウトリガ張出幅7.5m時の性能を図示しています。

オールテレーンクレーン
ATF-140N-5.1
フルオートラフィングジブ



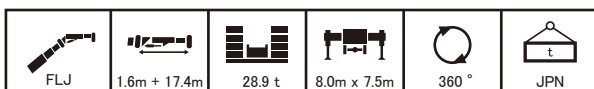
フルオートラフィングジブ



		m					51.7					56.0					60.0					m		
		43.0	43.0	43.0	43.0	43.0	51.7	51.7	51.7	51.7	51.7	56.0	56.0	56.0	56.0	56.0	60.0	60.0	60.0	60.0	60.0			
		°	5	15	30	45	60	5	15	30	45	60	5	15	30	45	60	5	15	30	45	60		
	8.0	7.3	7.3																				8.0	
	9.0	7.3	7.3	7.3																			9.0	
	10.0	7.3	7.3	7.3																			10.0	
	11.0	7.3	7.3	7.3	6.1	4.5																	11.0	
	12.0	7.3	7.3	7.3	6.0	4.5																	12.0	
	14.0	7.3	7.3	7.3	5.8	4.4																	14.0	
	16.0	7.3	7.3	7.3	5.7	4.4																	16.0	
	18.0	7.3	7.3	6.9	5.5																		18.0	
	20.0	7.3	7.3	6.7	5.4																		20.0	
	22.0	7.3	7.3	6.4	5.3																		22.0	
	24.0	7.3	7.3	6.2	5.2																		24.0	
	26.0	7.3	7.2	6.0	5.1																		26.0	
	28.0	6.6	6.8	5.8																			28.0	
	30.0	5.6	5.8	5.6																			30.0	
	32.0	4.8	4.9	5.1																			32.0	
	34.0	4.3	4.3	4.3																			34.0	
	36.0	3.9	3.9	3.9																			36.0	
	38.0	3.5	3.5																				38.0	
	40.0	3.2	3.2																				40.0	
	44.0	2.6																					44.0	
48.0																						48.0		

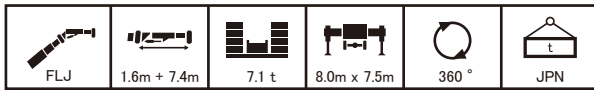


		m					51.7					56.0					60.0					m		
		43.0	43.0	43.0	43.0	43.0	51.7	51.7	51.7	51.7	51.7	56.0	56.0	56.0	56.0	56.0	60.0	60.0	60.0	60.0	60.0			
		°	5	15	30	45	60	5	15	30	45	60	5	15	30	45	60	5	15	30	45	60		
	9.0	4.3																					9.0	
	10.0	4.3	4.3																				10.0	
	11.0	4.3	4.3																				11.0	
	12.0	4.3	4.3																				12.0	
	14.0	4.3	4.3	4.2																			14.0	
	16.0	4.3	4.3	4.0	3.2	2.4																	16.0	
	18.0	4.3	4.3	3.9	3.1	2.4																	18.0	
	20.0	4.3	4.3	3.7	3.0	2.3																	20.0	
	22.0	4.3	4.3	3.6	2.9																		22.0	
	24.0	4.3	4.2	3.5	2.9																		24.0	
	26.0	4.3	4.0	3.4	2.8																		26.0	
	28.0	4.3	3.8	3.3	2.7																		28.0	
	30.0	4.2	3.7	3.1	2.7																		30.0	
	32.0	4.0	3.5	3.0																			32.0	
	34.0	3.7	3.4	2.9																			34.0	
	36.0	3.5	3.2	2.9																			36.0	
	38.0	3.3	3.1	2.8																			38.0	
	40.0	3.2	3.0	2.7																			40.0	
	44.0	2.7	2.8																				44.0	
	48.0	2.2	2.3																				48.0	
52.0																						52.0		



		m					51.7					56.0					60.0					m		
		43.0	43.0	43.0	43.0	43.0	51.7	51.7	51.7	51.7	51.7	56.0	56.0	56.0	56.0	56.0	60.0	60.0	60.0	60.0	60.0			
		°	5	15	30	45	60	5	15	30	45	60	5	15	30	45	60	5	15	30	45	60		
	11.0	3.3																					11.0	
	12.0	3.3	3.3																				12.0	
	14.0	3.3	3.2																				14.0	
	16.0	3.3	3.1																				16.0	
	18.0	3.3	2.9	2.4																			18.0	
	20.0	3.3	2.8	2.3	1.9																		20.0	
	22.0	3.1	2.7	2.2	1.8	1.5																	22.0	
	24.0	3.0	2.5	2.1	1.8	1.5																	24.0	
	26.0	2.8	2.4	2.1	1.7																		26.0	
	28.0	2.7	2.3	2.0	1.6																		28.0	
	30.0	2.6	2.3	1.9	1.6																		30.0	
	32.0	2.5	2.2	1.9	1.6																		32.0	
	34.0	2.4	2.1	1.8	1.5																		34.0	
	36.0	2.3	2.0	1.7	1.5																		36.0	
	38.0	2.2	2.0	1.7																			38.0	
	40.0	2.1	1.9	1.6																			40.0	
	44.0	2.0	1.8	1.6																			44.0	
	48.0	1.8	1.7																				48.0	
	52.0	1.7	1.6																				52.0	
	56.0	1.5																					56.0	

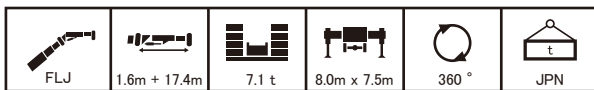
フルオートラフィングジブ



		m					51.7					56.0					60.0					m	
		43.0	43.0	43.0	43.0	43.0	51.7	51.7	51.7	51.7	51.7	56.0	56.0	56.0	56.0	56.0	60.0	60.0	60.0	60.0	60.0	60.0	60.0
		°	5	15	30	45	60	5	15	30	45	60	5	15	30	45	60	5	15	30	45	60	°
m	8.0	7.3	7.3																			8.0	
	9.0	7.3	7.3	7.3																		9.0	
	10.0	7.3	7.3	7.3																		10.0	
	11.0	7.3	7.3	7.3	6.1	4.5															5.3	11.0	
	12.0	7.3	7.3	7.3	6.0	4.5	7.3	7.3	7.3											5.3	5.3	12.0	
	14.0	7.3	7.3	7.3	5.8	4.4	7.3	7.3	7.3	6.0	4.5									5.3	5.3	5.3	14.0
	16.0	7.3	7.3	7.3	5.7	4.4	7.3	7.3	7.3	5.8	4.4	6.3	6.3	6.3	5.9	4.4	5.3	5.3	5.3	5.3	5.3	4.4	16.0
	18.0	7.3	7.3	6.9	5.5		7.3	7.3	7.3	5.7	4.3	6.3	6.3	6.3	5.7	4.4	5.3	5.3	5.3	5.3	4.4	4.4	18.0
	20.0	7.3	7.3	6.7	5.4		6.4	6.4	7.0	5.5		6.2	6.3	6.3	5.6		5.3	5.3	5.3	5.3	4.3	4.3	20.0
	22.0	5.7	6.1	6.4	5.3		4.9	5.3	5.8	5.4		4.3	4.7	5.3	5.5		4.2	4.7	5.3	5.3			22.0
	24.0	4.2	4.5	4.9	5.2		3.4	3.8	4.2	4.5		2.8	3.2	3.7	4.1		2.8	3.2	3.7	4.0			24.0
	26.0	3.1	3.3	3.7	3.9		2.3	2.6	3.0	3.2		1.7	2.1	2.5	2.8		1.7	2.0	2.5	2.8			26.0
	28.0	2.1	2.4	2.6			1.4	1.7	2.0	2.2		0.9	1.2	1.5	1.8				1.5	1.8			28.0
	30.0	1.4	1.6	1.8				0.9	1.2	1.4													30.0
	32.0	0.8	1.0	1.2											1.0								32.0



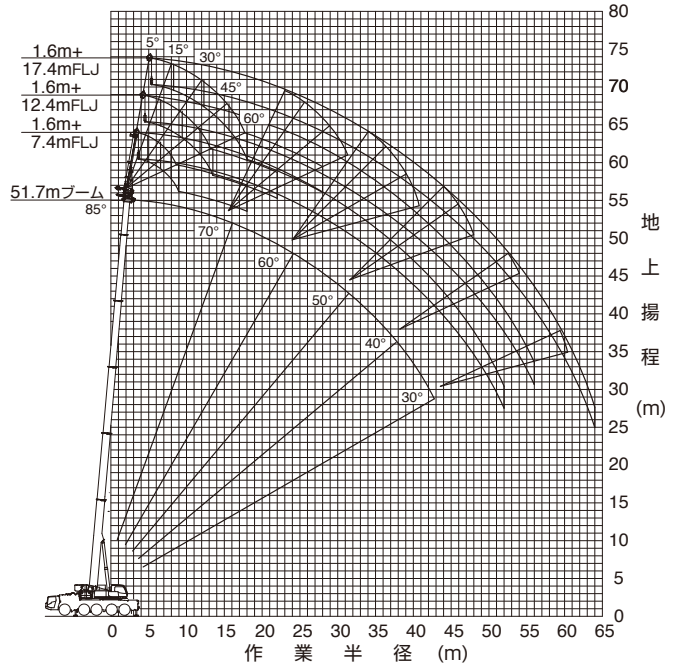
		m					51.7					56.0					60.0					m		
		43.0	43.0	43.0	43.0	43.0	51.7	51.7	51.7	51.7	51.7	56.0	56.0	56.0	56.0	56.0	60.0	60.0	60.0	60.0	60.0	60.0	60.0	
		°	5	15	30	45	60	5	15	30	45	60	5	15	30	45	60	5	15	30	45	60	°	
m	9.0	4.3																				9.0		
	10.0	4.3	4.3																			10.0		
	11.0	4.3	4.3					4.3														11.0		
	12.0	4.3	4.3					4.3	4.3														12.0	
	14.0	4.3	4.3	4.2				4.3	4.3											3.3	3.3		14.0	
	16.0	4.3	4.3	4.0	3.2	2.4		4.3	4.3	3.9									3.3	3.3			16.0	
	18.0	4.3	4.3	3.9	3.1	2.4		4.3	4.3	3.8	3.2	2.4							3.3	3.3	3.3		18.0	
	20.0	4.3	4.3	3.7	3.0	2.3		4.3	4.3	3.7	3.1	2.3							3.3	3.3	3.3	3.1	2.3	20.0
	22.0	4.3	4.3	3.6	2.9			4.3	4.3	3.5	3.0	2.3							3.3	3.3	3.3	3.0	2.3	22.0
	24.0	4.3	4.0	3.5	2.9			4.2	4.1	3.4	2.9								3.3	3.3	3.3	3.0	2.3	24.0
	26.0	3.9	3.8	3.4	2.8			3.1	3.6	3.3	2.9								2.4	3.0	3.2	2.9		26.0
	28.0	2.9	3.3	3.2	2.7			2.1	2.6	3.2	2.8								1.5	2.0	2.7	2.8		28.0
	30.0	2.1	2.5	2.9	2.7			1.4	1.8	2.3	2.7									1.3	1.8	2.2		30.0
	32.0	1.5	1.8	2.2				0.8	1.1	1.6	1.9										1.1	1.5		32.0
	34.0	1.0	1.2	1.5						1.0	1.2													34.0
	36.0			1.0											0.9									36.0



		m					51.7					56.0					60.0					m	
		43.0	43.0	43.0	43.0	43.0	51.7	51.7	51.7	51.7	51.7	56.0	56.0	56.0	56.0	56.0	60.0	60.0	60.0	60.0	60.0	60.0	60.0
		°	5	15	30	45	60	5	15	30	45	60	5	15	30	45	60	5	15	30	45	60	°
m	11.0	3.3																				11.0	
	12.0	3.3	3.3																				12.0
	14.0	3.3	3.2																				14.0
	16.0	3.3	3.1																				16.0
	18.0	3.3	2.9	2.4																			18.0
	20.0	3.3	2.8	2.3	1.9																		20.0
	22.0	3.1	2.7	2.2	1.8	1.5																	22.0
	24.0	3.0	2.5	2.1	1.8	1.5																	24.0
	26.0	2.8	2.4	2.1	1.7																		26.0
	28.0	2.6	2.3	2.0	1.6																		28.0
	30.0	2.5	2.2	1.9	1.6																		30.0
	32.0	2.1	2.1	1.9	1.6																		32.0
	34.0	1.6	1.9	1.8	1.5																		34.0
	36.0	1.1	1.4	1.7	1.5																		36.0
	38.0		1.0	1.3																			38.0
	40.0			0.9																			40.0

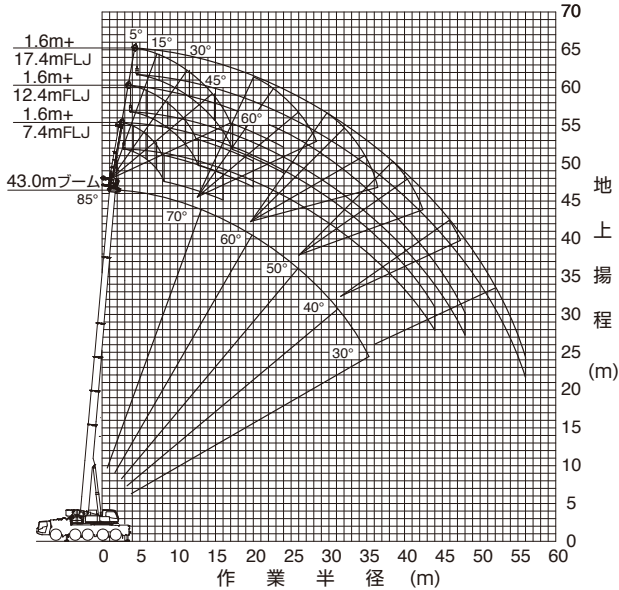
ブーム+フルオートラフィングジブ(FLJ)作業半径-揚程図

51.7mブーム+フルオートラフィングジブ



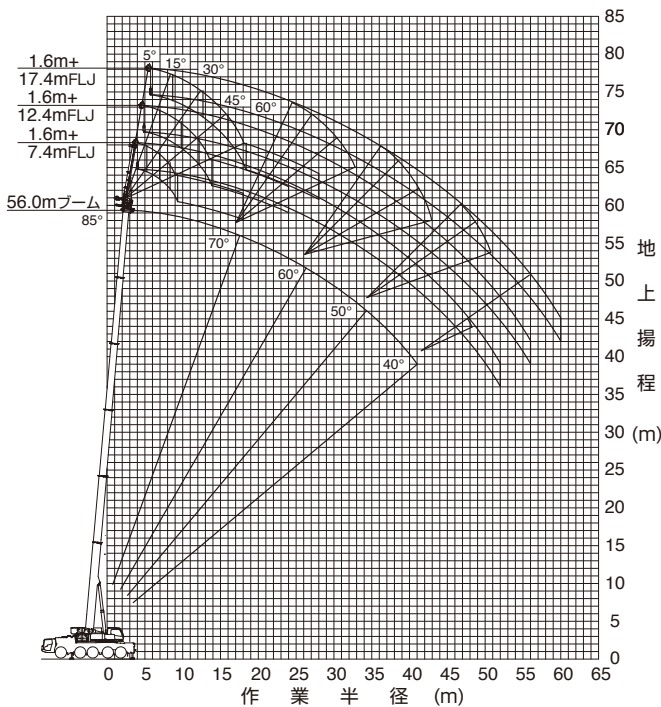
- (注意) 1. 上図はブームおよびジブのたわみを含んでいません。
2. カウンタウイト40.9t、アウトリガ張出幅7.5m時の性能を図示しています。

43.0mブーム+フルオートラフィングジブ



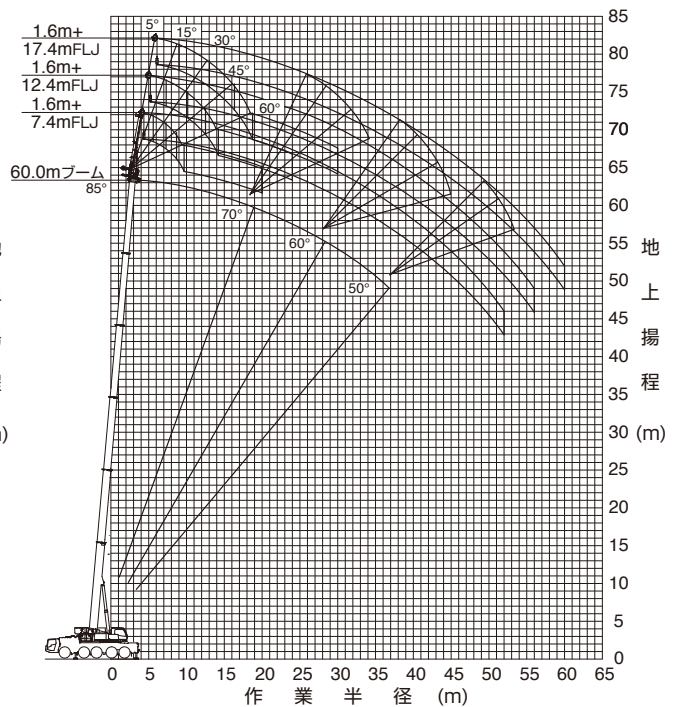
- (注意) 1. 上図はブームおよびジブのたわみを含んでいません。
2. カウンタウイト40.9t、アウトリガ張出幅7.5m時の性能を図示しています。

56.0mブーム+フルオートラフィングジブ



- (注意) 1. 上図はブームおよびジブのたわみを含んでいません。
2. カウンタウイト40.9t、アウトリガ張出幅7.5m時の性能を図示しています。

60.0mブーム+フルオートラフィングジブ



- (注意) 1. 上図はブームおよびジブのたわみを含んでいません。
2. カウンタウイト40.9t、アウトリガ張出幅7.5m時の性能を図示しています。

オールテレーンクレーン
ATF-140N-5.1
油圧チルトジブ

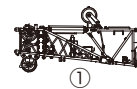


油圧チルトジブ

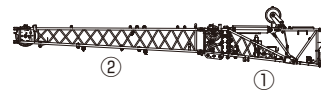


■ 油圧チルトジブ(HLJ)の構成

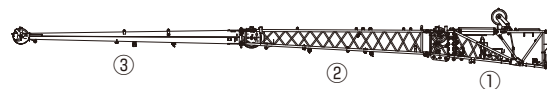
記号	名称	長さ
①	ベースジブ	1.0 m+2.8 m
②	ミドルAジブ	6.4 m
③	トップジブ	7.8 m
④	ミドルBジブ	7.0 m



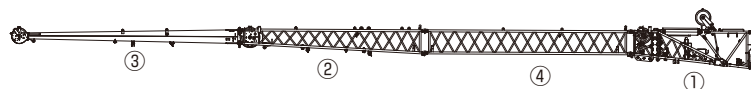
1.0m+ 2.8mジブ



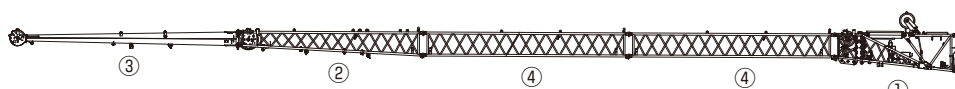
1.0m+ 9.2mジブ



1.0m+17.0mジブ



1.0m+24.0mジブ



1.0m+31.0mジブ

油圧チルトジブ



HLJ	1.0m + 2.8m	40.9 t	8.0m x 7.5m	360°	JPN
-----	-------------	--------	-------------	------	-----

		43.0			51.7			56.0			60.0				
m		43.0	43.0	43.0	51.7	51.7	51.7	56.0	56.0	56.0	60.0	60.0	60.0	m	
°		5	20	40	5	20	40	5	20	40	5	20	40	°	
	7.0		17.1	17.1											7.0
	8.0		17.1	17.1			11.1								8.0
	9.0		17.1	17.1			11.1	11.1		9.0	9.0		7.8		9.0
	10.0		17.1	17.1			11.1	11.1		9.0	9.0		7.8	7.8	10.0
	11.0		17.1	17.1			11.1	11.1		9.0	9.0		7.8	7.8	11.0
	12.0		17.1	17.1			11.1	11.1		9.0	9.0		7.8	7.8	12.0
	14.0	17.1	17.1	17.1			11.1	11.1		9.0	9.0		7.8	7.8	14.0
	16.0	17.1	17.1	16.8		11.1	11.1	11.1		9.0	9.0		7.8	7.8	16.0
	18.0	15.6	15.5	15.4		11.1	11.1	11.1	9.0	9.0	9.0		7.8	7.8	18.0
	20.0	14.2	14.1	14.0		11.1	11.1	11.1	9.0	9.0	9.0	7.8	7.8	7.8	20.0
	22.0	12.9	12.8	12.8		10.9	10.7	10.5	9.0	9.0	9.0	7.8	7.8	7.8	22.0
	24.0	11.8	11.8	11.7		10.2	10.0	9.8	9.0	9.0	8.9	7.6	7.4	7.3	24.0
	26.0	10.7	10.8	10.8		9.5	9.3	9.2	8.6	8.4	8.3	7.1	6.9	6.8	26.0
	28.0	9.4	9.5			8.9	8.8	8.7	8.0	7.9	7.8	6.6	6.5	6.4	28.0
	30.0	8.3	8.3			8.2	8.2	8.2	7.6	7.5	7.4	6.2	6.1	6.0	30.0
	32.0	7.3	7.3			7.5	7.5		7.1	7.0	7.0	5.8	5.7	5.7	32.0
	34.0	6.4	6.5			6.7	6.8		6.7	6.6		5.5	5.4	5.4	34.0
	36.0	5.7	5.7			6.0	6.0		6.2	6.3		5.1	5.1		36.0
	38.0	5.0				5.6	5.6		5.6	5.6		4.7	4.8		38.0
	40.0	4.5				5.2	5.2		5.0	5.0		4.4	4.4		40.0
	44.0					4.3			3.9	4.0		3.7	3.7		44.0
	48.0					3.5			3.1			3.1	3.1		48.0
52.0								2.4			2.4			52.0	
56.0											1.8			56.0	

HLJ	1.0m + 9.2m	40.9 t	8.0m x 7.5m	360°	JPN
-----	-------------	--------	-------------	------	-----






		43.0			51.7			56.0			60.0				
m		43.0	43.0	43.0	51.7	51.7	51.7	56.0	56.0	56.0	60.0	60.0	60.0	m	
°		5	20	40	5	20	40	5	20	40	5	20	40	°	
	9.0		10.6												9.0
	10.0		10.6												10.0
	11.0		10.6				7.0			6.4					11.0
	12.0	10.6	10.6	8.3			7.0			6.4			5.7		12.0
	14.0	10.6	10.6	7.9			7.0	7.0		6.4			5.7		14.0
	16.0	10.6	10.2	7.6		7.0	7.0	7.0	6.4	6.4	6.4		5.7	5.7	16.0
	18.0	10.6	9.6	7.4		7.0	7.0	7.0	6.4	6.4	6.4		5.7	5.7	18.0
	20.0	10.6	9.2	7.1		7.0	7.0	7.0	6.4	6.4	6.4		5.7	5.7	20.0
	22.0	10.6	8.7	6.9		7.0	7.0	7.0	6.4	6.4	6.4		5.7	5.7	22.0
	24.0	10.6	8.3	6.7		7.0	7.0	6.9	6.4	6.4	6.4		5.7	5.7	24.0
	26.0	10.0	8.0	6.6		7.0	7.0	6.7	6.4	6.4	6.4		5.5	5.4	26.0
	28.0	9.4	7.6	6.4		7.0	7.0	6.6	6.4	6.4	6.2		5.4	5.1	28.0
	30.0	8.6	7.4	6.3		7.0	7.0	6.4	6.4	6.2	5.9		5.0	4.8	30.0
	32.0	7.6	7.1	6.2		7.0	6.8	6.3	6.2	5.9	5.7		4.7	4.5	32.0
	34.0	6.8	6.9			6.5	6.4	6.2	6.0	5.7	5.5		4.4	4.2	34.0
	36.0	6.0	6.3			6.0	6.1	5.9	5.7	5.4	5.3		4.1	4.0	36.0
	38.0	5.4	5.6			5.5	5.7		5.4	5.2	5.1		3.9	3.7	38.0
	40.0	4.8	5.0			5.0	5.2		5.0	5.0			3.7	3.5	40.0
	44.0	3.8				4.1	4.2		4.2	4.4			3.3	3.2	44.0
	48.0	3.0				3.6	3.7		3.4	3.5			2.9	2.9	48.0
	52.0					3.0			2.7	2.8			2.5	2.6	52.0
	56.0					2.5			2.0				2.0	2.1	56.0
60.0								1.4				1.4		60.0	
64.0														64.0	




HLJ	1.0m + 17.0m	40.9 t	8.0m x 7.5m	360°	JPN
-----	--------------	--------	-------------	------	-----




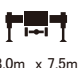


		43.0			51.7			56.0			60.0				
m		43.0	43.0	43.0	51.7	51.7	51.7	56.0	56.0	56.0	60.0	60.0	60.0	m	
°		5	20	40	5	20	40	5	20	40	5	20	40	°	
	12.0	5.5													12.0
	14.0	5.4	4.3				4.1								14.0
	16.0	5.1	4.1				4.1	4.0							16.0
	18.0	4.8	3.9	3.2			4.1	3.8					3.6	3.6	18.0
	20.0	4.6	3.8	3.1			4.1	3.7	3.1				3.6	3.5	20.0
	22.0	4.4	3.6	3.0			4.1	3.5	3.0				3.6	3.4	22.0
	24.0	4.2	3.5	3.0			4.1	3.4	2.9				3.6	3.3	24.0
	26.0	4.0	3.3	2.9			4.0	3.3	2.8				3.6	3.2	26.0
	28.0	3.8	3.2	2.8			3.8	3.2	2.8				3.6	3.1	28.0
	30.0	3.7	3.1	2.8			3.7	3.1	2.7				3.5	3.0	30.0
	32.0	3.5	3.0	2.7			3.5	3.0	2.7				3.4	2.9	32.0
	34.0	3.4	2.9	2.6			3.4	2.9	2.6				3.3	2.9	34.0
	36.0	3.3	2.9	2.6			3.3	2.9	2.6				3.2	2.8	36.0
	38.0	3.2	2.8	2.6			3.2	2.8	2.5				3.2	2.7	38.0
	40.0	3.1	2.7				3.1	2.7	2.5				3.0	2.7	40.0
	44.0	2.9	2.6				3.0	2.6	2.4				2.7	2.5	44.0
	48.0	2.8	2.5				2.8	2.5					2.4	2.3	48.0
	52.0	2.7					2.7	2.4					2.1	2.1	52.0
	56.0						2.6	2.4					1.9	1.9	56.0
	60.0						2.2						1.7	1.7	60.0
	64.0												1.3	1.4	64.0




油圧チルトジブ



 HLJ	 1.0m + 24.0m	 40.9 t	 8.0m x 7.5m	 360°	 JPN
---	--	--	---	--	---






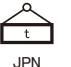
 m		43.0	43.0	43.0	51.7	51.7	51.7	56.0	56.0	56.0	60.0	60.0	60.0	m
 °		5	20	40	5	20	40	5	20	40	5	20	40	°
 m	14.0	3.8												14.0
	16.0	3.8			3.0									16.0
	18.0	3.8	3.8		3.0	3.0		2.9						18.0
	20.0	3.8	3.6		3.0	3.0		2.9	2.9		2.4			20.0
	22.0	3.8	3.5		3.0	3.0		2.9	2.9		2.4	2.4		22.0
	24.0	3.8	3.3	2.5	3.0	3.0		2.9	2.9		2.4	2.4		24.0
	26.0	3.8	3.2	2.4	3.0	3.0		2.9	2.9		2.4	2.4		26.0
	28.0	3.7	3.0	2.3	3.0	3.0	2.3	2.9	2.9	2.3	2.4	2.4		28.0
	30.0	3.5	2.9	2.3	3.0	2.9	2.3	2.9	2.9	2.3	2.4	2.4	2.0	30.0
	32.0	3.4	2.8	2.2	3.0	2.8	2.2	2.9	2.8	2.2	2.4	2.4	2.0	32.0
	34.0	3.3	2.6	2.1	3.0	2.7	2.2	2.9	2.8	2.2	2.4	2.4	1.9	34.0
	36.0	3.1	2.5	2.1	3.0	2.6	2.1	2.9	2.7	2.1	2.4	2.4	1.9	36.0
	38.0	3.0	2.4	2.0	3.0	2.5	2.1	2.9	2.6	2.1	2.4	2.3	1.9	38.0
	40.0	2.8	2.3	2.0	3.0	2.4	2.0	2.9	2.5	2.0	2.4	2.3	1.8	40.0
	44.0	2.6	2.2	1.9	2.8	2.3	1.9	2.8	2.3	1.9	2.2	2.1	1.7	44.0
	48.0	2.4	2.1		2.6	2.2	1.9	2.7	2.2	1.9	1.9	1.9	1.7	48.0
	52.0	2.2	1.9		2.4	2.0		2.5	2.1	1.8	1.7	1.7	1.6	52.0
	56.0	2.0	1.8		2.2	1.9		2.3	2.0		1.5	1.5	1.5	56.0
60.0	1.9			2.0	1.9		2.0	1.9		1.4	1.3		60.0	
64.0				1.8	1.8		1.5	1.7		1.2	1.2		64.0	
68.0				1.4							1.1		68.0	


 HLJ	 1.0m + 31.0m	 40.9 t	 8.0m x 7.5m	 360°	 JPN
---	--	--	---	--	---







 m		43.0	43.0	43.0	51.7	51.7	51.7	56.0	56.0	56.0	60.0	60.0	60.0	m
 °		5	20	40	5	20	40	5	20	40	5	20	40	°
 m	16.0	2.7												16.0
	18.0	2.7			2.2									18.0
	20.0	2.7			2.2									20.0
	22.0	2.7	2.6		2.2			2.1			1.6			22.0
	24.0	2.7	2.5		2.2	2.2		2.1	2.1		1.6			24.0
	26.0	2.7	2.3		2.2	2.2		2.1	2.1		1.6	1.6		26.0
	28.0	2.7	2.2		2.2	2.2		2.1	2.1		1.6	1.6		28.0
	30.0	2.7	2.1	1.6	2.2	2.1		2.1	2.1		1.6	1.6		30.0
	32.0	2.6	2.0	1.5	2.2	2.0		2.1	2.0		1.6	1.6		32.0
	34.0	2.5	1.9	1.4	2.2	1.9	1.4	2.1	1.9	1.4	1.6	1.6		34.0
	36.0	2.3	1.8	1.4	2.2	1.9	1.4	2.1	1.9	1.4	1.6	1.6	1.2	36.0
	38.0	2.2	1.7	1.3	2.2	1.8	1.4	2.1	1.8	1.4	1.6	1.6	1.2	38.0
	40.0	2.1	1.7	1.3	2.2	1.7	1.3	2.1	1.7	1.3	1.6	1.6	1.2	40.0
	44.0	1.9	1.5	1.2	2.0	1.6	1.2	2.0	1.6	1.2	1.6	1.5	1.1	44.0
	48.0	1.7	1.4	1.2	1.8	1.5	1.2	1.8	1.5	1.2	1.6	1.4	1.1	48.0
	52.0	1.5	1.3	1.1	1.6	1.4	1.1	1.7	1.4	1.1	1.4	1.3	1.0	52.0
	56.0	1.4	1.2		1.5	1.3	1.1	1.5	1.3	1.1	1.2	1.2	1.0	56.0
	60.0	1.3	1.1		1.4	1.2		1.4	1.2	1.1	1.0	1.0	0.9	60.0
64.0	1.2	1.1		1.3	1.1		1.3	1.2		0.9	0.9		64.0	
68.0	1.1			1.1	1.1		1.1	1.1			0.8		68.0	
72.0				1.0									72.0	


油圧チルトジブ








 HLJ	 1.0m + 2.8m	 28.9 t	 8.0m x 7.5m	 360°	 JPN
---	---	--	---	--	---

		m	43.0	43.0	43.0	51.7	51.7	51.7	56.0	56.0	56.0	60.0	60.0	60.0	m	
		°	5	20	40	5	20	40	5	20	40	5	20	40	°	
 m	7.0		17.1	17.1											7.0	
	8.0		17.1	17.1			11.1								8.0	
	9.0		17.1	17.1			11.1	11.1		9.0	9.0		7.8		9.0	
	10.0		17.1	17.1			11.1	11.1		9.0	9.0		7.8	7.8	10.0	
	11.0		17.1	17.1			11.1	11.1		9.0	9.0		7.8	7.8	11.0	
	12.0		17.1	17.1			11.1	11.1		9.0	9.0		7.8	7.8	12.0	
	14.0	17.1	17.1	17.1			11.1	11.1		9.0	9.0		7.8	7.8	14.0	
	16.0	17.1	17.1	16.8			11.1	11.1	11.1	9.0	9.0		7.8	7.8	16.0	
	18.0	15.6	15.5	15.4			11.1	11.1	11.1	9.0	9.0	9.0	7.8	7.8	18.0	
	20.0	13.1	13.3	13.5			11.1	11.1	11.1	9.0	9.0	9.0	7.8	7.8	20.0	
	22.0	11.1	11.2	11.4			10.9	10.7	10.5	9.0	9.0	9.0	7.8	7.8	22.0	
	24.0	9.5	9.6	9.7			9.8	9.9	9.8	9.0	9.0	8.9	7.6	7.4	24.0	
	26.0	8.1	8.2	8.3			8.4	8.5	8.7	8.6	8.4	8.3	7.1	6.9	6.8	26.0
	28.0	7.0	7.1				7.7	7.6	7.5	7.6	7.7	7.8	6.6	6.5	6.4	28.0
	30.0	6.4	6.3				7.0	7.1	7.1	6.6	6.7	6.8	6.2	6.1	6.0	30.0
	32.0	6.0	5.9				6.1	6.2		5.8	5.8	5.9	5.7	5.7	5.7	32.0
	34.0	5.5	5.5				5.4	5.5		5.0	5.1		5.0	5.1	5.2	34.0
	36.0	5.1	5.2				4.8	4.8		4.4	4.4		4.4	4.4		36.0
	38.0	4.7					4.2	4.2		3.8	3.9		3.8	3.9		38.0
	40.0	4.2					3.7	3.7		3.3	3.4		3.3	3.3		40.0
44.0						2.8			2.4	2.4		2.4	2.4		44.0	
48.0						2.1			1.6			1.6	1.7		48.0	

 HLJ	 1.0m + 9.2m	 28.9 t	 8.0m x 7.5m	 360°	 JPN
---	---	--	---	--	---




		m	43.0	43.0	43.0	51.7	51.7	51.7	56.0	56.0	56.0	60.0	60.0	60.0	m	
		°	5	20	40	5	20	40	5	20	40	5	20	40	°	
 m	9.0		10.6												9.0	
	10.0		10.6												10.0	
	11.0		10.6				7.0			6.4					11.0	
	12.0	10.6	10.6	8.3		7.0			6.4				5.7		12.0	
	14.0	10.6	10.6	7.9		7.0	7.0		6.4				5.7		14.0	
	16.0	10.6	10.2	7.6		7.0	7.0	7.0	6.4	6.4	6.4		5.7	5.7	16.0	
	18.0	10.6	9.6	7.4		7.0	7.0	7.0	6.4	6.4	6.4		5.7	5.7	18.0	
	20.0	10.6	9.2	7.1		7.0	7.0	7.0	6.4	6.4	6.4		5.7	5.7	20.0	
	22.0	10.6	8.7	6.9		7.0	7.0	7.0	6.4	6.4	6.4		5.7	5.7	22.0	
	24.0	9.8	8.3	6.7		7.0	7.0	6.9	6.4	6.4	6.4		5.7	5.7	24.0	
	26.0	8.5	8.0	6.6		7.0	7.0	6.7	6.4	6.4	6.4		5.5	5.4	26.0	
	28.0	7.3	7.6	6.4		7.0	7.0	6.6	6.4	6.4	6.2		5.4	5.1	4.9	28.0
	30.0	6.4	6.7	6.3		6.7	7.0	6.4	6.4	6.2	5.9		5.0	4.8	4.6	30.0
	32.0	5.5	5.8	6.1		6.1	6.2	6.3	6.1	5.9	5.7		4.7	4.5	4.3	32.0
	34.0	4.9	5.1			5.7	5.6	5.7	5.3	5.6	5.5		4.4	4.2	4.1	34.0
	36.0	4.6	4.6			5.0	5.3	5.2	4.7	4.9	5.2		4.1	4.0	3.9	36.0
	38.0	4.2	4.3			4.5	4.7		4.1	4.3	4.6		3.9	3.7	3.7	38.0
	40.0	3.9	4.0			4.0	4.2		3.6	3.8			3.5	3.5	3.5	40.0
	44.0	3.4				3.1	3.2		2.7	2.9			2.7	2.9		44.0
	48.0	2.9				2.4	2.5		1.9	2.1			1.8	2.0		48.0
52.0					1.7			1.2	1.3			1.1	1.3		52.0	
56.0					1.1										56.0	




 HLJ	 1.0m + 17.0m	 28.9 t	 8.0m x 7.5m	 360°	 JPN
---	--	--	---	--	---







		m	43.0	43.0	43.0	51.7	51.7	51.7	56.0	56.0	56.0	60.0	60.0	60.0	m	
		°	5	20	40	5	20	40	5	20	40	5	20	40	°	
 m	12.0	5.5													12.0	
	14.0	5.4	4.3			4.1									14.0	
	16.0	5.1	4.1			4.1	4.0			3.9	3.8		3.6	3.6	16.0	
	18.0	4.8	3.9	3.2		4.1	3.8			3.9	3.7		3.6	3.6	18.0	
	20.0	4.6	3.8	3.1		4.1	3.7	3.1		3.9	3.6		3.6	3.5	20.0	
	22.0	4.4	3.6	3.0		4.1	3.5	3.0		3.9	3.5	2.9	3.6	3.4	2.9	22.0
	24.0	4.2	3.5	3.0		4.1	3.4	2.9		3.9	3.3	2.9	3.6	3.3	2.8	24.0
	26.0	4.0	3.3	2.9		4.0	3.3	2.8		3.8	3.2	2.8	3.6	3.2	2.8	26.0
	28.0	3.8	3.2	2.8		3.8	3.2	2.8		3.7	3.1	2.7	3.6	3.1	2.7	28.0
	30.0	3.7	3.1	2.8		3.7	3.1	2.7		3.6	3.1	2.7	3.5	3.0	2.6	30.0
	32.0	3.5	3.0	2.7		3.5	3.0	2.7		3.5	3.0	2.6	3.4	2.9	2.6	32.0
	34.0	3.4	2.9	2.6		3.4	2.9	2.6		3.4	2.9	2.6	3.3	2.9	2.5	34.0
	36.0	3.3	2.9	2.6		3.3	2.9	2.6		3.3	2.8	2.5	3.2	2.8	2.5	36.0
	38.0	3.2	2.8	2.6		3.2	2.8	2.5		3.2	2.8	2.5	3.2	2.7	2.5	38.0
	40.0	3.1	2.7			3.1	2.7	2.5		3.1	2.7	2.4	3.0	2.7	2.4	40.0
	44.0	2.9	2.6			2.9	2.6	2.4		2.9	2.6	2.4	2.7	2.5	2.3	44.0
	48.0	2.7	2.5			2.7	2.5			2.3	2.5		2.2	2.3	2.3	48.0
	52.0	2.4				2.0	2.3			1.6	1.9		1.6	1.9		52.0
	56.0					1.5	1.7				1.3			1.3		56.0




油圧チルトジブ







 HLJ	 1.0m + 2.8m	 25.4 t	 8.0m x 7.5m	 360°	 JPN
---	---	--	---	--	---

		43.0			51.7			56.0			60.0				
 m		43.0	43.0	43.0	51.7	51.7	51.7	56.0	56.0	56.0	60.0	60.0	60.0	m	
 °		5	20	40	5	20	40	5	20	40	5	20	40	°	
 m	7.0		17.1	17.1											7.0
	8.0		17.1	17.1		11.1									8.0
	9.0		17.1	17.1		11.1	11.1		9.0	9.0		7.8			9.0
	10.0		17.1	17.1		11.1	11.1		9.0	9.0		7.8	7.8		10.0
	11.0		17.1	17.1		11.1	11.1		9.0	9.0		7.8	7.8		11.0
	12.0		17.1	17.1		11.1	11.1		9.0	9.0		7.8	7.8		12.0
	14.0	17.1	17.1	17.1		11.1	11.1		9.0	9.0		7.8	7.8		14.0
	16.0	17.1	17.1	16.8		11.1	11.1	11.1		9.0	9.0		7.8	7.8	16.0
	18.0	14.5	14.7	14.9		11.1	11.1	11.1	9.0	9.0	9.0		7.8	7.8	18.0
	20.0	12.1	12.3	12.4		11.1	11.1	11.1	9.0	9.0	9.0	7.8	7.8	7.8	20.0
	22.0	10.2	10.3	10.5		10.5	10.7	10.5	9.0	9.0	9.0	7.8	7.8	7.8	22.0
	24.0	8.6	8.7	8.9		8.9	9.1	9.2	9.0	9.0	8.9	7.6	7.4	7.3	24.0
	26.0	7.4	7.4	7.5		8.2	8.1	8.0	7.9	8.0	8.1	7.1	6.9	6.8	26.0
	28.0	6.8	6.8			7.2	7.3	7.4	6.8	6.9	7.0	6.6	6.5	6.4	28.0
	30.0	6.4	6.3			6.3	6.4	6.4	5.9	6.0	6.1	5.9	6.0	6.0	30.0
	32.0	6.0	5.9			5.5	5.5		5.1	5.2	5.2	5.1	5.2	5.2	32.0
	34.0	5.3	5.4			4.8	4.8		4.4	4.5		4.4	4.5	4.5	34.0
	36.0	4.7	4.7			4.2	4.2		3.8	3.8		3.8	3.8		36.0
	38.0	4.2				3.6	3.7		3.2	3.3		3.2	3.3		38.0
	40.0	3.7				3.1	3.2		2.8	2.8		2.8	2.8		40.0
44.0					2.3			1.9	1.9		1.9	1.9		44.0	
48.0					1.6			1.2			1.2	1.2		48.0	

 HLJ	 1.0m + 9.2m	 25.4 t	 8.0m x 7.5m	 360°	 JPN
---	---	--	---	--	---







		43.0			51.7			56.0			60.0				
 m		43.0	43.0	43.0	51.7	51.7	51.7	56.0	56.0	56.0	60.0	60.0	60.0	m	
 °		5	20	40	5	20	40	5	20	40	5	20	40	°	
 m	9.0		10.6												9.0
	10.0		10.6												10.0
	11.0		10.6			7.0			6.4						11.0
	12.0	10.6	10.6	8.3		7.0			6.4			5.7			12.0
	14.0	10.6	10.6	7.9		7.0	7.0		6.4			5.7			14.0
	16.0	10.6	10.2	7.6	7.0	7.0	7.0	6.4	6.4	6.4		5.7	5.7		16.0
	18.0	10.6	9.6	7.4	7.0	7.0	7.0	6.4	6.4	6.4	6.4	5.7	5.7	5.7	18.0
	20.0	10.6	9.2	7.1	7.0	7.0	7.0	6.4	6.4	6.4	6.4	5.7	5.7	5.7	20.0
	22.0	10.5	8.7	6.9	7.0	7.0	7.0	6.4	6.4	6.4	6.4	5.7	5.7	5.7	22.0
	24.0	9.0	8.3	6.7	7.0	7.0	6.9	6.4	6.4	6.4	6.4	5.7	5.7	5.5	24.0
	26.0	7.7	8.0	6.6	7.0	7.0	6.7	6.4	6.4	6.4	6.4	5.5	5.4	5.2	26.0
	28.0	6.6	7.0	6.4	6.9	7.0	6.6	6.4	6.4	6.2	5.4	5.1	4.9		28.0
	30.0	5.8	6.0	6.3	6.4	6.3	6.4	6.2	6.2	5.9	5.0	4.8	4.6		30.0
	32.0	5.3	5.3	5.5	5.8	5.8	5.8	5.4	5.7	5.7	4.7	4.5	4.3		32.0
	34.0	4.9	4.9		5.1	5.3	5.4	4.7	5.0	5.3	4.4	4.2	4.1		34.0
	36.0	4.6	4.6		4.4	4.7	4.9	4.1	4.3	4.6	4.0	4.0	3.9		36.0
	38.0	4.2	4.3		3.9	4.1		3.5	3.8	4.0	3.5	3.7	3.7		38.0
	40.0	3.9	4.0		3.4	3.6		3.0	3.3		3.0	3.2	3.5		40.0
	44.0	3.2			2.6	2.8		2.2	2.4		2.1	2.4			44.0
	48.0	2.5			1.9	2.0		1.4	1.6		1.3	1.6			48.0
52.0				1.2										52.0	




 HLJ	 1.0m + 17.0m	 25.4 t	 8.0m x 7.5m	 360°	 JPN
---	--	--	---	--	---






		43.0			51.7			56.0			60.0				
 m		43.0	43.0	43.0	51.7	51.7	51.7	56.0	56.0	56.0	60.0	60.0	60.0	m	
 °		5	20	40	5	20	40	5	20	40	5	20	40	°	
 m	12.0	5.5													12.0
	14.0	5.4	4.3		4.1										14.0
	16.0	5.1	4.1		4.1	4.0		3.9	3.8		3.6	3.6			16.0
	18.0	4.8	3.9	3.2	4.1	3.8		3.9	3.7		3.6	3.6			18.0
	20.0	4.6	3.8	3.1	4.1	3.7	3.1	3.9	3.6		3.6	3.5			20.0
	22.0	4.4	3.6	3.0	4.1	3.5	3.0	3.9	3.5	2.9	3.6	3.4	2.9		22.0
	24.0	4.2	3.5	3.0	4.1	3.4	2.9	3.9	3.3	2.9	3.6	3.3	2.8	2.8	24.0
	26.0	4.0	3.3	2.9	4.0	3.3	2.8	3.8	3.2	2.8	3.6	3.2	2.8		26.0
	28.0	3.8	3.2	2.8	3.8	3.2	2.8	3.7	3.1	2.7	3.6	3.1	2.7		28.0
	30.0	3.7	3.1	2.8	3.7	3.1	2.7	3.6	3.1	2.7	3.5	3.0	2.6		30.0
	32.0	3.5	3.0	2.7	3.5	3.0	2.7	3.5	3.0	2.6	3.4	2.9	2.6		32.0
	34.0	3.4	2.9	2.6	3.4	2.9	2.6	3.4	2.9	2.6	3.3	2.9	2.5		34.0
	36.0	3.3	2.9	2.6	3.3	2.9	2.6	3.3	2.8	2.5	3.2	2.8	2.5		36.0
	38.0	3.2	2.8	2.6	3.2	2.8	2.5	3.2	2.8	2.5	3.2	2.7	2.5		38.0
	40.0	3.1	2.7		3.1	2.7	2.5	3.1	2.7	2.4	3.0	2.7	2.4		40.0
	44.0	2.8	2.6		2.9	2.6	2.4	2.6	2.6	2.4	2.5	2.5	2.3		44.0
	48.0	2.7	2.5		2.2	2.5		1.8	2.2		1.8	2.1	2.3		48.0
	52.0	2.2			1.6	1.9		1.2	1.5		1.2	1.5			52.0
	56.0				1.1	1.3									56.0




油圧チルトジブ



 HLJ	 1.0m + 24.0m	 25.4 t	 8.0m x 7.5m	 360°	 JPN
---	--	--	---	--	---

 m	43.0	43.0	43.0	51.7	51.7	51.7	56.0	56.0	56.0	60.0	60.0	60.0	m	
 °	5	20	40	5	20	40	5	20	40	5	20	40	°	
 m	14.0	3.8											14.0	
	16.0	3.8		3.0									16.0	
	18.0	3.8	3.8	3.0	3.0		2.9						18.0	
	20.0	3.8	3.6	3.0	3.0		2.9	2.9		2.4			20.0	
	22.0	3.8	3.5	3.0	3.0		2.9	2.9		2.4	2.4		22.0	
	24.0	3.8	3.3	2.5	3.0	3.0		2.9	2.9	2.4	2.4		24.0	
	26.0	3.8	3.2	2.4	3.0	3.0		2.9	2.9	2.4	2.4		26.0	
	28.0	3.7	3.0	2.3	3.0	3.0	2.3	2.9	2.9	2.3	2.4	2.4		28.0
	30.0	3.5	2.9	2.3	3.0	2.9	2.3	2.9	2.9	2.3	2.4	2.4	2.0	30.0
	32.0	3.4	2.8	2.2	3.0	2.8	2.2	2.9	2.8	2.2	2.4	2.4	2.0	32.0
	34.0	3.3	2.6	2.1	3.0	2.7	2.2	2.9	2.8	2.2	2.4	2.4	1.9	34.0
	36.0	3.1	2.5	2.1	3.0	2.6	2.1	2.9	2.7	2.1	2.4	2.4	1.9	36.0
	38.0	3.0	2.4	2.0	3.0	2.5	2.1	2.9	2.6	2.1	2.4	2.3	1.9	38.0
	40.0	2.8	2.3	2.0	3.0	2.4	2.0	2.9	2.5	2.0	2.4	2.3	1.8	40.0
	44.0	2.6	2.2	1.9	2.8	2.3	1.9	2.7	2.3	1.9	2.2	2.1	1.7	44.0
	48.0	2.3	2.1		2.4	2.2	1.9	2.0	2.2	1.9	1.9	1.9	1.7	48.0
	52.0	2.1	1.9		1.8	2.0		1.4	1.8	1.8	1.3	1.7	1.6	52.0
56.0	1.9	1.8		1.2	1.6			1.2			1.1	1.5	56.0	
60.0	1.4												60.0	

 HLJ	 1.0m + 31.0m	 25.4 t	 8.0m x 7.5m	 360°	 JPN
---	--	--	---	--	---

 m	43.0	43.0	43.0	51.7	51.7	51.7	56.0	56.0	56.0	60.0	60.0	60.0	m	
 °	5	20	40	5	20	40	5	20	40	5	20	40	°	
 m	16.0	2.7											16.0	
	18.0	2.7		2.2									18.0	
	20.0	2.7		2.2									20.0	
	22.0	2.7	2.6	2.2			2.1			1.6			22.0	
	24.0	2.7	2.5	2.2	2.2		2.1	2.1		1.6			24.0	
	26.0	2.7	2.3	2.2	2.2	2.2	2.1	2.1		1.6	1.6		26.0	
	28.0	2.7	2.2	2.2	2.2	2.2	2.1	2.1		1.6	1.6		28.0	
	30.0	2.7	2.1	1.6	2.2	2.1		2.1	2.1		1.6	1.6	30.0	
	32.0	2.6	2.0	1.5	2.2	2.0		2.1	2.0		1.6	1.6	32.0	
	34.0	2.5	1.9	1.4	2.2	1.9	1.4	2.1	1.9	1.4	1.6	1.6		34.0
	36.0	2.3	1.8	1.4	2.2	1.9	1.4	2.1	1.9	1.4	1.6	1.6	1.2	36.0
	38.0	2.2	1.7	1.3	2.2	1.8	1.4	2.1	1.8	1.4	1.6	1.6	1.2	38.0
	40.0	2.1	1.7	1.3	2.2	1.7	1.3	2.1	1.7	1.3	1.6	1.6	1.2	40.0
	44.0	1.9	1.5	1.2	2.0	1.6	1.2	2.0	1.6	1.2	1.6	1.5	1.1	44.0
	48.0	1.7	1.4	1.2	1.8	1.5	1.2	1.8	1.5	1.2	1.6	1.4	1.1	48.0
	52.0	1.5	1.3	1.1	1.6	1.4	1.1	1.5	1.4	1.1	1.4	1.3	1.0	52.0
	56.0	1.3	1.2		1.3	1.3	1.1		1.3	1.1		1.2	1.0	56.0
60.0	1.2	1.1			1.2				1.1			0.9	60.0	
64.0	1.1	1.1											64.0	

油圧チルトジブ



HLJ	1.0m + 2.8m	15.4 t	8.0m x 7.5m	360°	JPN
-----	-------------	--------	-------------	------	-----

	m	43.0	43.0	43.0	51.7	51.7	51.7	56.0	56.0	56.0	60.0	60.0	60.0	m
	°	5	20	40	5	20	40	5	20	40	5	20	40	°
	7.0		17.1	17.1										7.0
	8.0		17.1	17.1		11.1								8.0
	9.0		17.1	17.1		11.1	11.1		9.0	9.0		7.8		9.0
	10.0		17.1	17.1		11.1	11.1		9.0	9.0		7.8	7.8	10.0
	11.0		17.1	17.1		11.1	11.1		9.0	9.0		7.8	7.8	11.0
	12.0		17.1	17.1		11.1	11.1		9.0	9.0		7.8	7.8	12.0
	14.0	17.1	17.1	17.1		11.1	11.1		9.0	9.0		7.8	7.8	14.0
	16.0	13.6	13.9	14.2	11.1	11.1	11.1		9.0	9.0		7.8	7.8	16.0
	18.0	10.9	11.1	11.3	11.1	11.1	11.1	9.0	9.0	9.0		7.8	7.8	18.0
	20.0	9.5	9.4	9.3	9.8	9.8	9.8	9.0	9.0	9.0	7.8	7.8	7.8	20.0
	22.0	8.7	8.6	8.5	8.2	8.4	8.5	7.8	8.0	8.1	7.8	7.8	7.8	22.0
	24.0	7.5	7.6	7.7	6.9	7.0	7.2	6.5	6.6	6.8	6.5	6.6	6.8	24.0
	26.0	6.4	6.5	6.6	5.8	5.9	6.0	5.4	5.6	5.7	5.4	5.5	5.7	26.0
	28.0	5.5	5.6		4.9	5.0	5.1	4.5	4.6	4.7	4.5	4.6	4.7	28.0
	30.0	4.7	4.8		4.2	4.3	4.3	3.8	3.9	4.0	3.8	3.9	4.0	30.0
	32.0	4.1	4.1		3.5	3.6		3.1	3.2	3.3	3.1	3.2	3.3	32.0
	34.0	3.5	3.5		2.9	3.0		2.5	2.6		2.5	2.6	2.7	34.0
	36.0	3.0	3.0		2.4	2.5		1.9	2.0		1.9	2.0		36.0
	38.0	2.5			1.9	1.9		1.4	1.5		1.4	1.5		38.0
	40.0	2.1			1.4	1.5		1.0	1.0			1.0		40.0

HLJ	1.0m + 9.2m	15.4 t	8.0m x 7.5m	360°	JPN
-----	-------------	--------	-------------	------	-----

	m	43.0	43.0	43.0	51.7	51.7	51.7	56.0	56.0	56.0	60.0	60.0	60.0	m
	°	5	20	40	5	20	40	5	20	40	5	20	40	°
	9.0		10.6											9.0
	10.0		10.6											10.0
	11.0		10.6			7.0			6.4					11.0
	12.0	10.6	10.6	8.3		7.0			6.4			5.7		12.0
	14.0	10.6	10.6	7.9		7.0	7.0		6.4			5.7		14.0
	16.0	10.6	10.2	7.6	7.0	7.0	7.0	6.4	6.4	6.4		5.7	5.7	16.0
	18.0	10.6	9.6	7.4	7.0	7.0	7.0	6.4	6.4	6.4	5.7	5.7	5.7	18.0
	20.0	9.2	9.2	7.1	7.0	7.0	7.0	6.4	6.4	6.4	5.7	5.7	5.7	20.0
	22.0	7.6	8.1	6.9	7.0	7.0	7.0	6.4	6.4	6.4	5.7	5.7	5.7	22.0
	24.0	7.2	7.0	6.7	6.6	7.0	6.9	6.4	6.4	6.4	5.7	5.7	5.5	24.0
	26.0	6.8	6.6	6.4	6.1	6.4	6.5	5.7	6.2	6.4	5.5	5.4	5.2	26.0
	28.0	5.8	6.1	6.0	5.2	5.6	6.0	4.8	5.2	5.7	4.8	5.1	4.9	28.0
	30.0	5.1	5.3	5.6	4.5	4.8	5.1	4.1	4.4	4.8	4.0	4.4	4.6	30.0
	32.0	4.4	4.6	4.9	3.8	4.1	4.4	3.4	3.7	4.1	3.4	3.7	4.1	32.0
	34.0	3.8	4.0		3.2	3.5	3.8	2.9	3.1	3.5	2.8	3.1	3.4	34.0
	36.0	3.3	3.5		2.7	3.0	3.2	2.4	2.6	2.9	2.3	2.6	2.9	36.0
	38.0	2.9	3.0		2.3	2.5		1.9	2.2	2.4	1.9	2.1	2.4	38.0
	40.0	2.5	2.6		1.9	2.1		1.4	1.7		1.4	1.7	2.0	40.0
	44.0	1.8			1.1	1.3								44.0
	48.0	1.2												48.0




HLJ	1.0m + 17.0m	15.4 t	8.0m x 7.5m	360°	JPN
-----	--------------	--------	-------------	------	-----






	m	43.0	43.0	43.0	51.7	51.7	51.7	56.0	56.0	56.0	60.0	60.0	60.0	m
	°	5	20	40	5	20	40	5	20	40	5	20	40	°
	12.0	5.5												12.0
	14.0	5.4	4.3		4.1									14.0
	16.0	5.1	4.1		4.1	4.0		3.9	3.8		3.6	3.6		16.0
	18.0	4.8	3.9	3.2	4.1	3.8		3.9	3.7		3.6	3.6		18.0
	20.0	4.6	3.8	3.1	4.1	3.7	3.1	3.9	3.6		3.6	3.5		20.0
	22.0	4.4	3.6	3.0	4.1	3.5	3.0	3.9	3.5	2.9	3.6	3.4	2.9	22.0
	24.0	4.2	3.5	3.0	4.1	3.4	2.9	3.9	3.3	2.9	3.6	3.3	2.8	24.0
	26.0	4.0	3.3	2.9	4.0	3.3	2.8	3.8	3.2	2.8	3.6	3.2	2.8	26.0
	28.0	3.8	3.2	2.8	3.8	3.2	2.8	3.7	3.1	2.7	3.6	3.1	2.7	28.0
	30.0	3.7	3.1	2.8	3.7	3.1	2.7	3.6	3.1	2.7	3.5	3.0	2.6	30.0
	32.0	3.5	3.0	2.7	3.5	3.0	2.7	3.5	3.0	2.6	3.4	2.9	2.6	32.0
	34.0	3.3	2.9	2.6	3.4	2.9	2.6	3.2	2.9	2.6	3.2	2.9	2.5	34.0
	36.0	3.2	2.9	2.6	3.1	2.9	2.6	2.7	2.8	2.5	2.6	2.8	2.5	36.0
	38.0	3.1	2.7	2.6	2.6	2.7	2.5	2.2	2.7	2.5	2.1	2.6	2.5	38.0
	40.0	2.8	2.6		2.2	2.6	2.5	1.7	2.2	2.4	1.6	2.1	2.4	40.0
	44.0	2.0	2.3		1.4	1.7	2.1		1.3	1.7		1.3	1.7	44.0
	48.0	1.4	1.6				1.0							48.0




油圧チルトジブ



 HLJ	 1.0m + 24.0m	 15.4 t	 8.0m x 7.5m	 360°	 JPN
---	--	--	---	--	---

 m	43.0	43.0	43.0	51.7	51.7	51.7	56.0	56.0	56.0	60.0	60.0	60.0	m	
 °	5	20	40	5	20	40	5	20	40	5	20	40	°	
 m	14.0	3.8											14.0	
	16.0	3.8		3.0									16.0	
	18.0	3.8	3.8	3.0	3.0		2.9						18.0	
	20.0	3.8	3.6	3.0	3.0		2.9	2.9		2.4			20.0	
	22.0	3.8	3.5	3.0	3.0		2.9	2.9		2.4	2.4		22.0	
	24.0	3.8	3.3	2.5	3.0	3.0	2.9	2.9		2.4	2.4		24.0	
	26.0	3.8	3.2	2.4	3.0	3.0	2.9	2.9		2.4	2.4		26.0	
	28.0	3.7	3.0	2.3	3.0	3.0	2.3	2.9	2.9	2.3	2.4	2.4	28.0	
	30.0	3.5	2.9	2.3	3.0	2.9	2.3	2.9	2.9	2.3	2.4	2.4	2.0	30.0
	32.0	3.4	2.8	2.2	3.0	2.8	2.2	2.9	2.8	2.2	2.4	2.4	2.0	32.0
	34.0	3.3	2.6	2.1	3.0	2.7	2.2	2.9	2.8	2.2	2.4	2.4	1.9	34.0
	36.0	2.9	2.5	2.1	2.9	2.6	2.1	2.9	2.7	2.1	2.4	2.4	1.9	36.0
	38.0	2.9	2.4	2.0	2.8	2.5	2.1	2.4	2.6	2.1	2.4	2.3	1.9	38.0
	40.0	2.8	2.3	2.0	2.4	2.4	2.0	2.0	2.5	2.0	1.9	2.3	1.8	40.0
	44.0	2.3	2.2	1.9	1.6	2.1	1.9	1.2	1.7	1.9		1.6	1.7	44.0
	48.0	1.6	1.9			1.4	1.8			1.5			1.4	48.0
	52.0	1.1	1.3											52.0

 HLJ	 1.0m + 31.0m	 15.4 t	 8.0m x 7.5m	 360°	 JPN
---	--	--	---	--	---

 m	43.0	43.0	43.0	51.7	51.7	51.7	56.0	56.0	56.0	60.0	60.0	60.0	m	
 °	5	20	40	5	20	40	5	20	40	5	20	40	°	
 m	16.0	2.7											16.0	
	18.0	2.7		2.2									18.0	
	20.0	2.7		2.2									20.0	
	22.0	2.7	2.6	2.2			2.1			1.6			22.0	
	24.0	2.7	2.5	2.2	2.2		2.1	2.1		1.6			24.0	
	26.0	2.7	2.3	2.2	2.2		2.1	2.1		1.6	1.6		26.0	
	28.0	2.7	2.2	2.2	2.2		2.1	2.1		1.6	1.6		28.0	
	30.0	2.7	2.1	1.6	2.2	2.1	2.1	2.1		1.6	1.6		30.0	
	32.0	2.6	2.0	1.5	2.2	2.0	2.1	2.0		1.6	1.6		32.0	
	34.0	2.5	1.9	1.4	2.2	1.9	1.4	2.1	1.9	1.4	1.6	1.6	34.0	
	36.0	2.3	1.8	1.4	2.2	1.9	1.4	2.1	1.9	1.4	1.6	1.6	1.2	36.0
	38.0	2.2	1.7	1.3	2.2	1.8	1.4	2.1	1.8	1.4	1.6	1.6	1.2	38.0
	40.0	2.1	1.7	1.3	2.1	1.7	1.3	2.1	1.7	1.3	1.6	1.6	1.2	40.0
	44.0	1.8	1.5	1.2	1.8	1.6	1.2	1.4	1.6	1.2		1.5	1.1	44.0
	48.0	1.6	1.4	1.2	1.1	1.5	1.2		1.3	1.2			1.1	48.0
	52.0	1.2	1.3	1.1		1.0	1.1			1.1				52.0
	56.0		1.0				0.9							56.0

油圧チルトジブ



HLJ	1.0m + 2.8m	7.1 t	8.0m x 7.5m	360°	JPN
-----	-------------	-------	-------------	------	-----

		m	43.0	43.0	43.0	51.7	51.7	51.7	56.0	56.0	56.0	60.0	60.0	60.0	m
		°	5	20	40	5	20	40	5	20	40	5	20	40	°
	7.0		17.1	17.1											7.0
	8.0		17.1	17.1		11.1									8.0
	9.0		17.1	17.1		11.1	11.1			9.0	9.0		7.8		9.0
	10.0		17.1	17.1		11.1	11.1			9.0	9.0		7.8	7.8	10.0
	11.0		17.1	17.1		11.1	11.1			9.0	9.0		7.8	7.8	11.0
	12.0		17.1	17.1		11.1	11.1			9.0	9.0		7.8	7.8	12.0
	14.0	13.1	13.5	13.8		11.1	11.1			9.0	9.0		7.8	7.8	14.0
	16.0	11.5	11.4	11.2	10.4	10.7	10.9			9.0	9.0		7.8	7.8	16.0
	18.0	9.5	9.7	9.9	8.9	9.1	9.3	8.2	8.5	8.8			7.8	7.8	18.0
	20.0	7.2	7.4	7.6	6.3	6.5	6.8	5.6	5.9	6.2	5.6	5.9	6.2	6.2	20.0
	22.0	5.4	5.5	5.7	4.5	4.7	4.9	3.9	4.1	4.3	3.9	4.1	4.3	4.3	22.0
	24.0	4.0	4.1	4.3	3.2	3.4	3.5	2.6	2.8	3.0	2.6	2.8	3.0	3.0	24.0
	26.0	3.0	3.1	3.2	2.2	2.3	2.5	1.6	1.8	2.0	1.6	1.8	1.9	1.9	26.0
	28.0	2.1	2.2		1.4	1.5	1.6	0.9	1.0	1.1	0.9	1.0	1.1	1.1	28.0
	30.0	1.5	1.6		0.8	0.9	1.0								30.0
	32.0	0.9	1.0												32.0

HLJ	1.0m + 9.2m	7.1 t	8.0m x 7.5m	360°	JPN
-----	-------------	-------	-------------	------	-----

		m	43.0	43.0	43.0	51.7	51.7	51.7	56.0	56.0	56.0	60.0	60.0	60.0	m
		°	5	20	40	5	20	40	5	20	40	5	20	40	°
	9.0		10.6												9.0
	10.0		10.6												10.0
	11.0		10.6			7.0				6.4					11.0
	12.0	10.6	10.6	8.3		7.0				6.4			5.7		12.0
	14.0	10.6	10.6	7.9		7.0	7.0			6.4			5.7		14.0
	16.0	10.4	10.2	7.6	7.0	7.0	7.0	6.4	6.4	6.4			5.7	5.7	16.0
	18.0	8.1	8.9	7.4	7.0	7.0	7.0	6.4	6.4	6.4	5.7	5.7	5.7	5.7	18.0
	20.0	7.2	7.2	7.1	6.8	7.0	7.0	6.4	6.4	6.4	5.7	5.7	5.7	5.7	20.0
	22.0	6.8	7.2	6.9	6.1	6.4	6.7	5.7	6.3	6.4	5.7	5.7	5.7	5.7	22.0
	24.0	5.7	6.0	6.5	5.0	5.5	6.0	4.6	5.1	5.7	4.6	5.1	5.5	5.5	24.0
	26.0	4.8	5.1	5.5	4.2	4.6	5.0	3.8	4.2	4.7	3.7	4.2	4.7	4.7	26.0
	28.0	4.0	4.3	4.6	3.4	3.8	4.2	3.0	3.4	3.8	3.0	3.4	3.8	3.8	28.0
	30.0	3.4	3.6	3.9	2.8	3.1	3.5	2.4	2.7	3.1	2.3	2.7	3.1	3.1	30.0
	32.0	2.8	3.1	3.3	2.2	2.5	2.8	1.9	2.2	2.5	1.8	2.1	2.5	2.5	32.0
	34.0	2.3	2.6		1.8	2.0	2.3		1.7	2.0		1.7	2.0	2.0	34.0
	36.0	1.9	2.1		1.4	1.6	1.8				1.5			1.5	36.0
	38.0	1.6	1.7												38.0
40.0	1.2	1.4												40.0	

HLJ	1.0m + 17.0m	7.1 t	8.0m x 7.5m	360°	JPN
-----	--------------	-------	-------------	------	-----

		m	43.0	43.0	43.0	51.7	51.7	51.7	56.0	56.0	56.0	60.0	60.0	60.0	m
		°	5	20	40	5	20	40	5	20	40	5	20	40	°
	12.0	5.5													12.0
	14.0	5.4	4.3		4.1										14.0
	16.0	5.1	4.1		4.1	4.0			3.9	3.8		3.6	3.6		16.0
	18.0	4.8	3.9	3.2	4.1	3.8			3.9	3.7		3.6	3.6		18.0
	20.0	4.6	3.8	3.1	4.1	3.7	3.1		3.9	3.6		3.6	3.5		20.0
	22.0	4.4	3.6	3.0	4.1	3.5	3.0		3.9	3.5	2.9	3.6	3.4	2.9	22.0
	24.0	4.0	3.5	3.0	3.9	3.4	2.9	3.6	3.3	2.9	3.5	3.3	3.3	2.8	24.0
	26.0	3.8	3.3	2.9	3.1	3.3	2.8	2.6	3.2	2.8	2.5	3.2	2.8	2.8	26.0
	28.0	3.1	3.1	2.8	2.3	3.1	2.8	1.8	2.7	2.7	1.7	2.6	2.7	2.7	28.0
	30.0	2.4	3.0	2.7	1.6	2.3	2.7	1.1	1.9	2.7	1.0	1.8	2.6	2.6	30.0
	32.0	1.8	2.4	2.6	1.1	1.7	2.4		1.3	2.1		1.2	2.0	2.0	32.0
	34.0	1.3	1.8	2.3		1.2	1.8		0.8	1.5			1.4	1.4	34.0
	36.0	0.9	1.4	1.8			1.3				0.9			0.9	36.0
	38.0		1.0	1.3			0.8								38.0

油圧チルトジブ



HLJ	1.0m + 24.0m	28.9 t	8.0m x 7.5m	360°	JPN
-----	--------------	--------	-------------	------	-----

		m	43.0	43.0	43.0	51.7	51.7	51.7	56.0	56.0	56.0	60.0	60.0	60.0	m		
		°	5	20	40	5	20	40	5	20	40	5	20	40	°		
	m	14.0	3.8													14.0	
		16.0	3.8			3.0											16.0
		18.0	3.8	3.8		3.0	3.0			2.9							18.0
		20.0	3.8	3.6		3.0	3.0			2.9	2.9		2.4				20.0
		22.0	3.8	3.5		3.0	3.0			2.9	2.9		2.4	2.4			22.0
		24.0	3.8	3.3	2.5	3.0	3.0			2.9	2.9		2.4	2.4			24.0
		26.0	3.8	3.2	2.4	3.0	3.0			2.9	2.9		2.4	2.4			26.0
		28.0	3.7	3.0	2.3	3.0	3.0	2.3		2.9	2.9	2.3	2.4	2.4			28.0
		30.0	3.5	2.9	2.3	3.0	2.9	2.3		2.9	2.9	2.3	2.4	2.4	2.0		30.0
		32.0	3.4	2.8	2.2	3.0	2.8	2.2		2.9	2.8	2.2	2.4	2.4	2.0		32.0
		34.0	3.3	2.6	2.1	3.0	2.7	2.2		2.9	2.8	2.2	2.4	2.4	1.9		34.0
		36.0	3.1	2.5	2.1	3.0	2.6	2.1		2.9	2.7	2.1	2.4	2.4	1.9		36.0
		38.0	3.0	2.4	2.0	3.0	2.5	2.1		2.9	2.6	2.1	2.4	2.3	1.9		38.0
		40.0	2.8	2.3	2.0	3.0	2.4	2.0		2.9	2.5	2.0	2.4	2.3	1.8		40.0
		44.0	2.6	2.2	1.9	2.8	2.3	1.9		2.8	2.3	1.9	2.2	2.1	1.7		44.0
		48.0	2.4	2.1		2.6	2.2	1.9		2.4	2.2	1.9	1.9	1.9	1.7		48.0
		52.0	2.1	1.9		2.2	2.0			1.8	2.1	1.8	1.7	1.7	1.6		52.0
		56.0	1.9	1.8		1.6	1.9			1.2	1.6		1.1	1.5	1.5		56.0
60.0	1.7			1.1	1.4										60.0		




HLJ	1.0m + 31.0m	28.9 t	8.0m x 7.5m	360°	JPN
-----	--------------	--------	-------------	------	-----




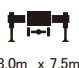

		m	43.0	43.0	43.0	51.7	51.7	51.7	56.0	56.0	56.0	60.0	60.0	60.0	m		
		°	5	20	40	5	20	40	5	20	40	5	20	40	°		
	m	16.0	2.7													16.0	
		18.0	2.7			2.2											18.0
		20.0	2.7			2.2											20.0
		22.0	2.7	2.6		2.2				2.1			1.6				22.0
		24.0	2.7	2.5		2.2	2.2			2.1	2.1		1.6				24.0
		26.0	2.7	2.3		2.2	2.2			2.1	2.1		1.6	1.6			26.0
		28.0	2.7	2.2		2.2	2.2			2.1	2.1		1.6	1.6			28.0
		30.0	2.7	2.1	1.6	2.2	2.1			2.1	2.1		1.6	1.6			30.0
		32.0	2.6	2.0	1.5	2.2	2.0			2.1	2.0		1.6	1.6			32.0
		34.0	2.5	1.9	1.4	2.2	1.9	1.4		2.1	1.9	1.4	1.6	1.6			34.0
		36.0	2.3	1.8	1.4	2.2	1.9	1.4		2.1	1.9	1.4	1.6	1.6	1.2		36.0
		38.0	2.2	1.7	1.3	2.2	1.8	1.4		2.1	1.8	1.4	1.6	1.6	1.2		38.0
		40.0	2.1	1.7	1.3	2.2	1.7	1.3		2.1	1.7	1.3	1.6	1.6	1.2		40.0
		44.0	1.9	1.5	1.2	2.0	1.6	1.2		2.0	1.6	1.2	1.6	1.5	1.1		44.0
		48.0	1.7	1.4	1.2	1.8	1.5	1.2		1.8	1.5	1.2	1.6	1.4	1.1		48.0
		52.0	1.5	1.3	1.1	1.6	1.4	1.1		1.7	1.4	1.1	1.4	1.3	1.0		52.0
		56.0	1.4	1.2		1.5	1.3	1.1		1.3	1.3	1.1	1.2	1.2	1.0		56.0
		60.0	1.2	1.1		1.2	1.2				1.2	1.1		1.0	0.9		60.0
64.0	1.1	1.1				1.1									64.0		
68.0	1.0														68.0		




油圧チルトジブ



 HLJ	 1.0m + 24.0m	 7.1 t	 8.0m x 7.5m	 360°	 JPN
---	--	---	---	--	---

	m	43.0	43.0	43.0	51.7	51.7	51.7	56.0	56.0	56.0	60.0	60.0	60.0	m
	°	5	20	40	5	20	40	5	20	40	5	20	40	°
 m	14.0	3.8												14.0
	16.0	3.8			3.0									16.0
	18.0	3.8	3.8		3.0	3.0		2.9						18.0
	20.0	3.8	3.6		3.0	3.0		2.9	2.9		2.4			20.0
	22.0	3.8	3.5		3.0	3.0		2.9	2.9		2.4	2.4		22.0
	24.0	3.8	3.3	2.5	3.0	3.0		2.9	2.9		2.4	2.4		24.0
	26.0	3.0	3.2	2.4	2.9	3.0		2.9	2.9		2.4	2.4		26.0
	28.0	2.9	3.0	2.3	2.7	3.0	2.3	2.2	2.9	2.3	2.1	2.4		28.0
	30.0	2.8	2.8	2.3	2.0	2.9	2.3	1.5	2.5	2.3	1.4	2.3	2.0	30.0
	32.0	2.1	2.7	2.2	1.4	2.2	2.2	0.9	1.8	2.2	0.8	1.7	2.0	32.0
	34.0	1.6	2.3	2.1	0.9	1.7	2.2		1.3	2.2		1.2	1.9	34.0
	36.0	1.2	1.8	2.1		1.2	2.0		0.8	1.6			1.5	36.0
	38.0	0.8	1.4	2.0		0.8	1.5			1.1			1.0	38.0
	40.0		1.0	1.5			1.1							40.0
44.0			0.8										44.0	

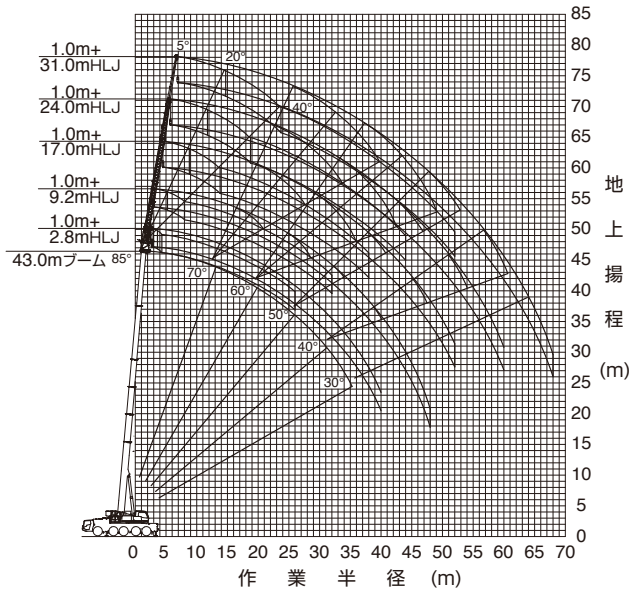
 HLJ	 1.0m + 31.0m	 7.1 t	 8.0m x 7.5m	 360°	 JPN
---	--	---	---	--	---

	m	43.0	43.0	43.0	51.7	51.7	51.7	56.0	56.0	56.0	60.0	60.0	60.0	m
	°	5	20	40	5	20	40	5	20	40	5	20	40	°
 m	16.0	2.7												16.0
	18.0	2.7			2.2									18.0
	20.0	2.7			2.2									20.0
	22.0	2.7	2.6		2.2			2.1			1.6			22.0
	24.0	2.7	2.5		2.2	2.2		2.1	2.1		1.6			24.0
	26.0	2.7	2.3		2.2	2.2		2.1	2.1		1.6	1.6		26.0
	28.0	2.6	2.2		2.2	2.2		2.1	2.1		1.6	1.6		28.0
	30.0	2.1	2.1	1.6	2.1	2.1		1.8	2.1		1.6	1.6		30.0
	32.0	2.1	2.0	1.5	1.7	2.0		1.2	2.0		1.1	1.6		32.0
	34.0	1.9	1.9	1.4	1.1	1.9	1.4		1.6	1.4		1.4		34.0
	36.0	1.4	1.8	1.4		1.5	1.4		1.1	1.4		1.0		36.0
	38.0	1.0	1.7	1.3		1.1	1.4			1.4				38.0
	40.0		1.3	1.3			1.3			1.1				40.0
	44.0			1.2										44.0



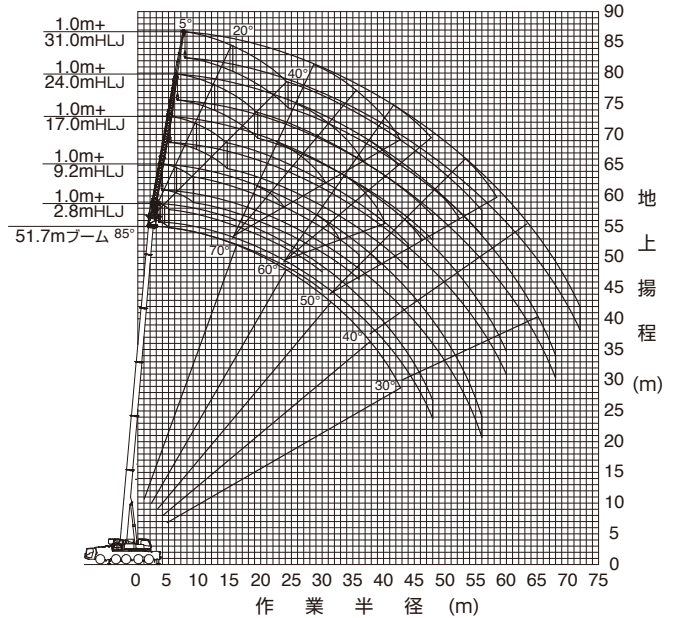
ブーム+油圧チルトジブ(HLJ)作業半径-揚程図

43.0mブーム+油圧チルトジブ



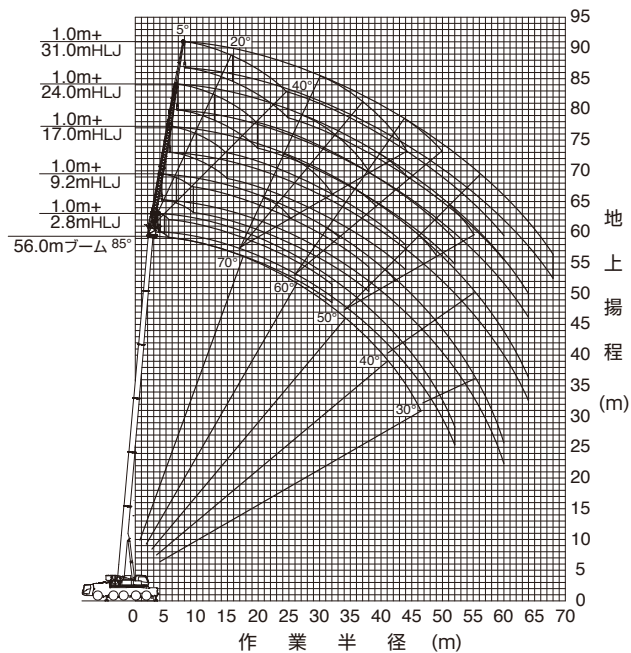
- (注意) 1. 上図はブームおよびジブのたわみを含んでいません。
 2. カウンタウエイト40.9t、アウトリガ張出幅7.5m時の性能を図示しています。

51.7mブーム+油圧チルトジブ



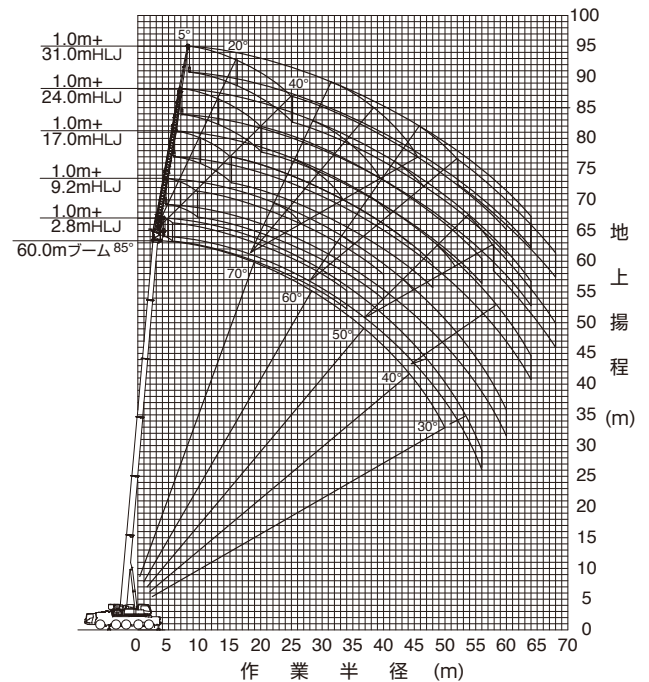
- (注意) 1. 上図はブームおよびジブのたわみを含んでいません。
 2. カウンタウエイト40.9t、アウトリガ張出幅7.5m時の性能を図示しています。

56.0mブーム+油圧チルトジブ



- (注意) 1. 上図はブームおよびジブのたわみを含んでいません。
 2. カウンタウエイト40.9t、アウトリガ張出幅7.5m時の性能を図示しています。

60.0mブーム+油圧チルトジブ



- (注意) 1. 上図はブームおよびジブのたわみを含んでいません。
 2. カウンタウエイト40.9t、アウトリガ張出幅7.5m時の性能を図示しています。

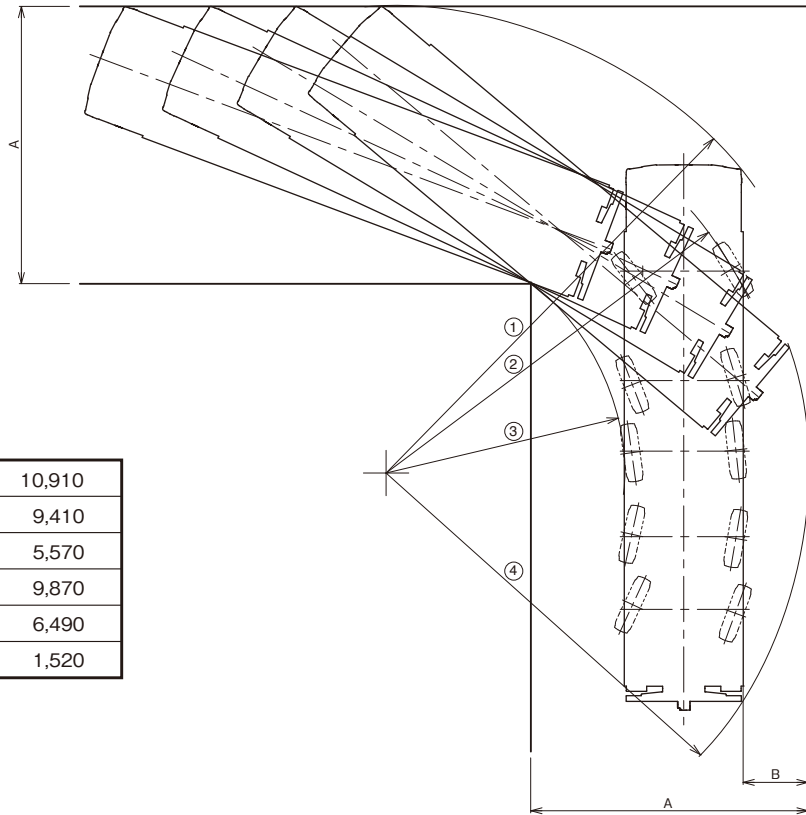
走行

■ 最小直角通路幅

単位(mm)

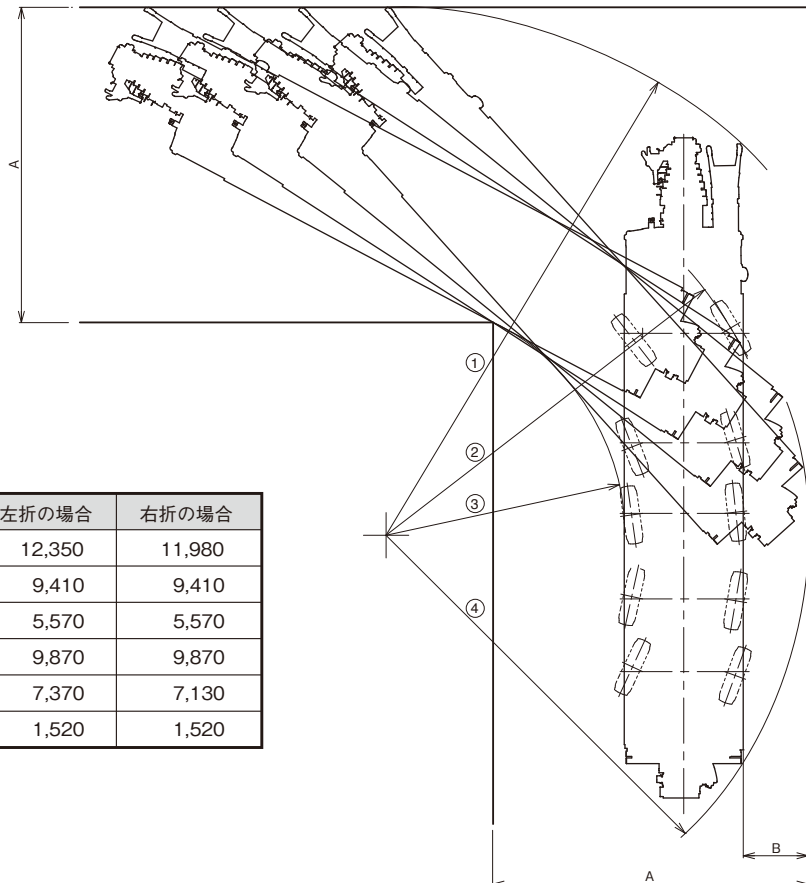
● 公道走行状態

①	10,910
②	9,410
③	5,570
④	9,870
A	6,490
B	1,520



● 構内移動姿勢

	左折の場合	右折の場合
①	12,350	11,980
②	9,410	9,410
③	5,570	5,570
④	9,870	9,870
A	7,370	7,130
B	1,520	1,520

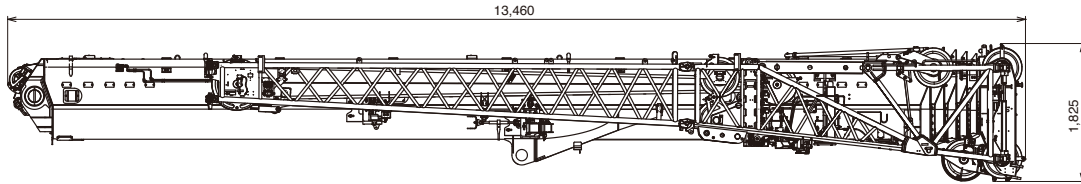


搬 送

■ 分解搬送部品

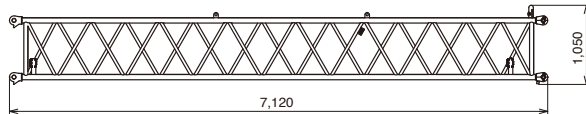
単位(mm)

- ブーム(15.2 t) + 油圧チルトジブ(HLJ 1.9 t) 17.1 t



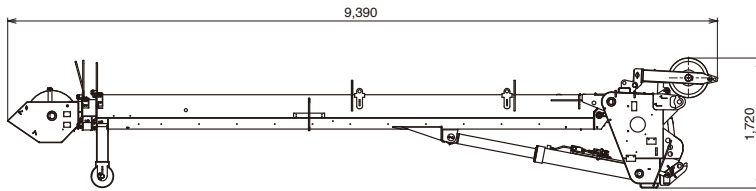
幅 2,370

- ミドルBジブ 0.48 t × 2個



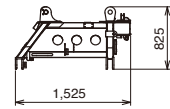
幅 665

- フルオートラフィングジブ(FLJ) 2.3 t



幅 1,090

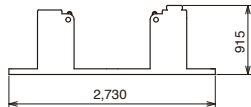
- アダプタ 0.3 t



幅 1,670

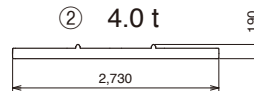
- カウンタウエイト(C/W)

- ① 3.1 t



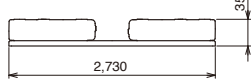
長さ 1,780

- ② 4.0 t



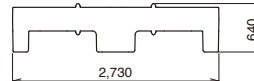
長さ 1,835

- ③ 8.3 t



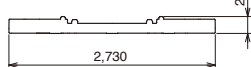
長さ 1,840

- ④ 10.0 t



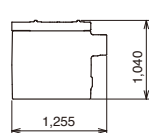
長さ 1,835

- ⑤ 3.5 t

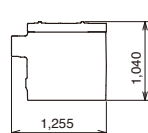


長さ 1,830

- ⑥ 6.0 t



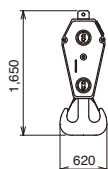
- ⑦ 6.0 t



長さ 1,275

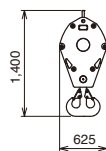
- フック

100tフック 1.12 t × 2個



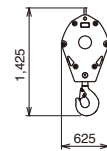
幅 700

60tフック 0.6 t



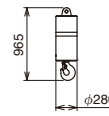
幅 355

26tフック 0.45 t



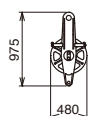
幅 235

8.7tフック 0.3 t



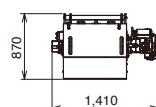
幅 280

- アタッチメントシーブ 0.11 t



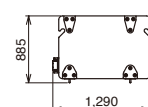
幅 325

- サブウインチ 1.5 t



長さ 875

- 1.5t ウェイト (オプション) 1.5 t



幅 310